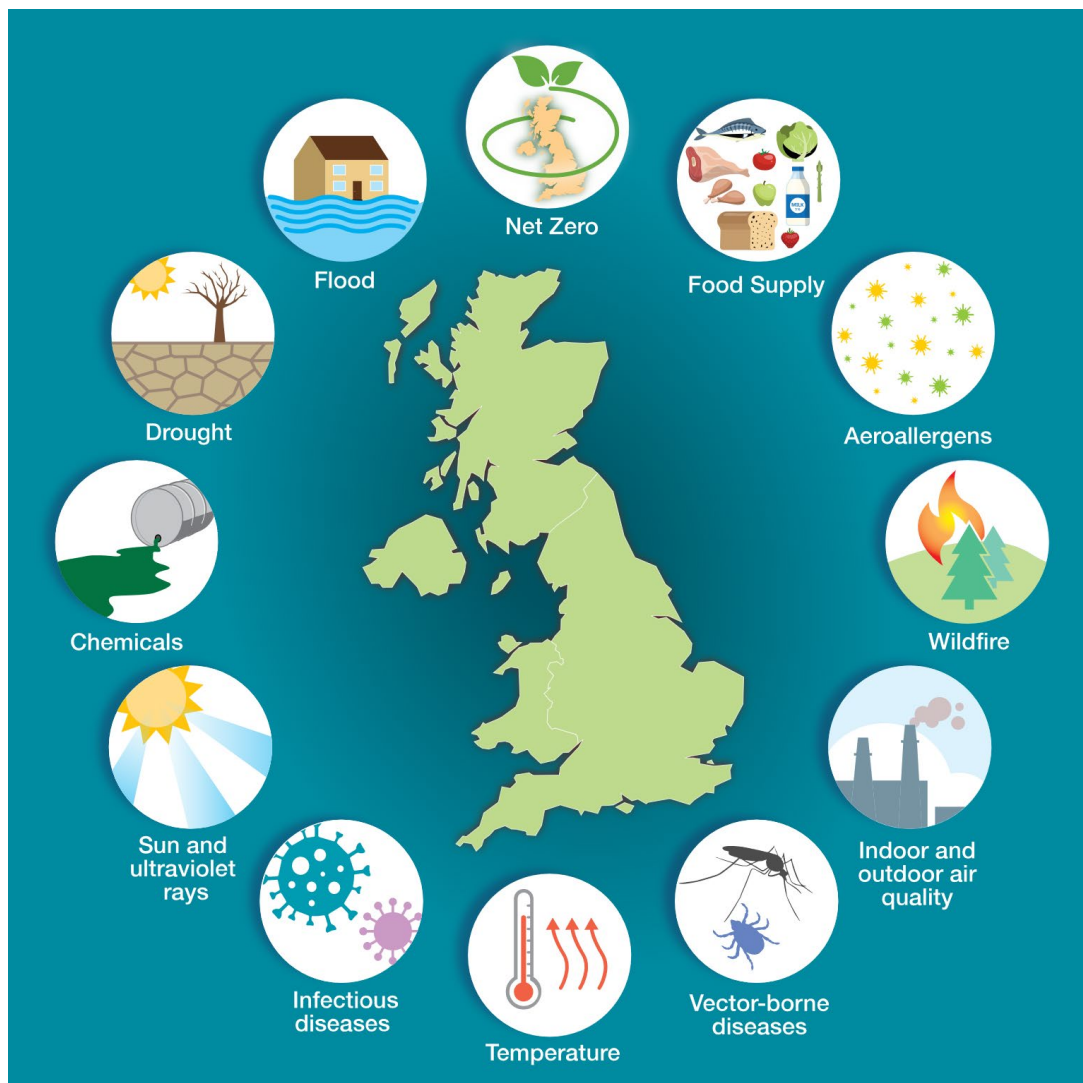




UK Health
Security
Agency

Health Effects of Climate Change (HECC) in the UK: 2023 report

Chapter 5. Impact of climate change policies on indoor environmental quality and health in UK housing



Summary

People in the UK spend on average more than 95% of their time in indoor environments, and 66% of time in their own homes. Chapter 5 presents a review of evidence on the impact of climate change policies on indoor environmental quality and health in the UK. The chapter synthesises new evidence published since the last 'Health Effects of Climate Change in the UK' report, including the impact of climate mitigation and adaptation policies. The chapter was written by scientists at the UK Health Security Agency (UKHSA), University College London, University of Nottingham, University of Strathclyde and London School of Hygiene and Tropical Medicine.

The UK building stock is among the oldest in Europe, and large-scale home retrofits are required to reduce energy demand and achieve net zero. This can include insulating external walls, double or triple glazing, low-carbon heating with heat pumps, and draught proofing. Arrangements for new builds include high levels of airtightness with mechanical ventilation and heat recovery, cooling measures, triple glazed windows and low-carbon heating. However, energy efficiency measures, if poorly installed, may increase indoor air pollutant concentrations from internal sources, such as carbon monoxide, particulate matter, nitrogen dioxide, radon and biological contamination (for example, allergens, mould, viruses and bacteria). Exposure to increased levels of these contaminants is associated with adverse health effects including respiratory, cardiovascular or neurological conditions and cancer. Ventilation is necessary to maintain good indoor air quality and reduce risk from some infectious diseases, although this is outside of the scope of this chapter. Maintaining indoor temperatures at recommended levels and reducing exposure to air pollution should also be considered.

This chapter highlights several key insights for public health. Measures to mitigate climate change such as passive or low-carbon heating and cooling, energy efficient lighting, and solar energy will enable existing homes to become more energy efficient, may help alleviate fuel poverty and improve thermal comfort in winter. However, such measures also increase building airtightness and without accompanying improvements in ventilation, retrofitted homes may experience degraded indoor environmental quality. Overheating in summer is associated with adverse physical and psychological health impacts. The effects of exposure to noise from mechanical ventilation are not yet understood; however, the ingress of environmental noise from transport has adverse psychological and physiological impacts on health, such as sleep disturbance and cardiovascular and metabolic diseases.

People spend a large proportion of their time indoors and, therefore, the indoor environment is an important determinant of health. Further work is needed to increase awareness among people and professionals and to develop interventions to reduce exposure to indoor air pollutants.

The chapter highlights 2 priority research gaps and priorities, including the need to:

- assess the impact of energy efficiency measures and behaviour on health, through systematic surveillance of IEQ, with cohort studies and citizen science approaches
- evaluate the impact of energy efficiency retrofitting on indoor environmental quality with a particular focus on high-risk settings and populations

UKHSA together with the Office for Health Improvement and Disparities (OHID), and the Department for Levelling Up, Housing and Communities (DLUHC) has jointly published [guidance on damp and mould for rented housing providers](#). This is part of the government's response to the [Prevention of Future Deaths report](#), following the death of a 2 year old child from a severe respiratory condition due to prolonged exposure to mould in his home. UKHSA has a well-developed radon survey capability that is available across the UK. Survey results feed into the development and refinement of [radon maps](#) that are available through UKHSA working with the British Geological Survey.

Contents

1. Background.....	6
2. Impact of climate change policies on buildings	7
2.1 Building regulations	7
2.2 Energy efficiency measures	8
3. Climate change, indoor air quality and health outcomes.....	10
3.1 Determinants of exposure	10
3.2 Health effects.....	15
3.3. Interventions for indoor air quality.....	17
4. Climate change, building overheating and health outcomes.....	20
4.1 Determinants of exposure	20
4.2 Health impacts.....	21
4.3 Interventions for building overheating.....	22
5. Climate change, noise and health outcomes	25
5.1 Determinants of exposure	25
5.2 Health impacts.....	25
5.3 Interventions for noise	26
6. Flood and water damage and IAQ	28
6.1 Determinants of exposure	28
6.2 Health impacts of floods	28
6.3 Interventions for flooding	28
7. Lighting	30
7.1 Determinants of exposure	30
7.2 Health impacts.....	30
7.3 Interventions for lighting	31
8. Impact of energy efficiency in homes on indoor environmental quality and health.....	32
8.1 Impact of energy efficiency measures on IEQ.....	32
8.2 Impact of energy efficiency measures on health.....	34
9. Conclusions and priorities	36
9.1 Research priorities.....	36
9.2 Implications for public health	36
9.3 Considerations for built environment professionals	37
Acronyms and abbreviations.....	38
References.....	39

Chapter 5. Impact of climate change policies on indoor environmental quality and health in UK housing

Authors

- Sani Dimitroulopoulou – Air Quality and Public Health (UKHSA)
- Sierra Clark – Air Quality and Public Health, UKHSA
- Mike Davies – UCL Institute for Environmental Design and Engineering, University College London
- Benjamin Fenech – Noise and Public Health, UKHSA
- Tracy Gooding – Radon Group, UKHSA
- Ben Jones – Department of Architecture and Built Environment, University of Nottingham
- Anna Mavrogianni – UCL Institute for Environmental Design and Engineering, University College London
- Kaja Milczewska – Air Quality and Public Health, UKHSA
- Luke Price: Laser and Optical Radiation Dosimetry Group, UKHSA
- Georgia Rodgers – Noise and Public Health, UKHSA
- Tim Sharpe – Department of Architecture, University of Strathclyde
- Marcella Ucci – UCL Institute for Environmental Design and Engineering, University College London
- Paul Wilkinson – London School of Hygiene and Tropical Medicine
- John Thornes – Climate and Health Assessment Team, UKHSA

Dedicated to the memory of the invaluable collaborator Paul Wilkinson.

Acknowledgements

The authors would like to gratefully acknowledge to contribution of the following colleagues in the screening of indoor air quality and overheating papers: Alice Middleton, Christos Halios, Onyekachi Uche, Sharon Sridhara, Emily Cheek and Glyn Smith. The review could not be performed without the excellent support of the UKHSA librarians Anh Tran and Charlotte Prew. The authors also wish to thank Catherine Noakes and Rajat Gupta for their valuable reviews of the chapter. The final chapter remains the responsibility of the authors.

1. Background

The impact of climate change adaptation and mitigation policies on indoor environmental quality have been discussed to varying degrees in all 3 previous 'Health Effects of Climate Change in the UK (HECC)' reports ([1 to 3](#)). The third report in 2012 devoted a whole chapter to indoor air quality and provided a comprehensive overview ([3](#)). The 2012 report was followed by a publication in 2015, which noted that much of the impact of climate change in the UK is likely to amplify existing risks related to heat exposure, flooding, and chemical and biological contamination in buildings ([4](#)).

As the climate changes in the UK, buildings that were designed to operate under the previous climatic conditions, may not function well under the changing and future conditions, affecting the health of those who live, work, study, or play in them. The 'Third UK Climate Change Risk Assessment (CCRA3)' technical report concluded that "there is very little evidence for the impact of climate change on indoor air quality" ([5](#)).

With the UK population spending, on average, over 95% of their time in indoor environments and 66% of their time in their own homes ([6](#)), the built environment has a significant modifying effect on population exposure and health. According to previously published reviews ([4](#), [7 to 9](#)), climate change is likely to affect indoor environmental quality and hence health and comfort of occupants, through changes to outdoor environmental conditions (including higher temperatures, more frequent and severe heatwaves, wildfires, severe storms, and increases in outdoor ozone levels and outdoor pollens); mitigation (to improve energy efficiency in buildings) and adaptation measures (including the provision of mechanical ventilation to address thermal comfort and indoor air quality (IAQ) ([7](#))), which can often have unintended consequences for indoor environmental quality (IEQ); and occupant behaviour, including indoor activities, the use of windows and mechanical ventilation.

This chapter aims to provide the latest knowledge on the impact of mitigation and adaptation policies related to climate change, first on building regulations, and consequently on indoor environmental quality in the UK and the role of occupants on IEQ. Improving home energy efficiency will normally improve occupant thermal comfort, particularly in colder weather; however, if poorly installed, it may lead to unintended consequences in terms of deterioration of indoor air quality and biological contamination (including damp and mould), building overheating, and noise from ventilation systems, batteries and pumps. This chapter reports on indoor environmental quality issues in the UK, identifies reasons of concern in terms of health, and discusses interventions that may help to minimise health risks.

2. Impact of climate change policies on buildings

2.1 Building regulations

The third UK CCRA technical report highlighted that IEQ is highly affected by net zero policies, which aim to reduce carbon dioxide (CO₂) emissions from the housing sector by introducing energy efficiency measures (5). This section provides the background on current legislation and net zero policies and their impact on IEQ.

It is estimated that the residential sector was responsible for around 16% of greenhouse gas (GHG) emissions in the UK in 2020, with CO₂ being the most prominent gas from this sector (97%) (10). The use of natural gas for space heating and cooking is the main source of emissions from the residential sector (10). Compared to 2019, the emissions from the residential sector increased by 1.0% as more people stayed at home during the COVID-19 pandemic (10).

A report by the Climate Change Committee (CCC) emphasised that near-complete elimination of GHG emissions from UK buildings is required to meet climate change targets (11). Despite a quarter more homes having been built since 1990, the overall total emissions from the residential sector decreased by about a fifth in the years leading up to 2017, due to a combination of “tighter building and product standards, in particular better boilers; the uptake of insulation and other energy efficiency measures, mainly delivered through obligations on energy suppliers; and greater awareness of potential energy savings” (12). However, declines in emissions from the UK’s 29 million homes has now stalled.

The government recently made a significant update to the ‘Building Regulations for England’. The current guidance covers ventilation, conservation of fuel and power, overheating requirements of building regulations, and infrastructure for the charging of electric vehicles; these are as set out in Part F (13), Part L (14), Part O (15) and Part S (16) (FLOS) of the Building Regulations, respectively, for dwellings and buildings other than dwellings. The updated building regulations FLOS have been in force since 15 June 2022. This guidance provides intermediate uplift to existing energy efficiency standards and is a stepping stone towards the government’s new Future Homes Standard (due to be introduced in 2025). The Future Homes Standard, which builds on the Clean Growth Building mission, will aim to future-proof new build homes with low carbon heating and high levels of energy efficiency. The uplift to Approved Document F aims to ensure that ventilation provision is not reduced when energy efficiency work is carried out in existing homes. For both new homes and existing homes, there are mandated checklists for installations of mechanical ventilation products, together with a guidance on the importance of ventilation. All replacement windows should be fitted with trickle vents unless a) there is an alternative form of ventilation, such as air bricks or whole house

mechanical ventilation with heat recovery (MVHR) or b) the ventilation is not worse than before the works were done.

The uplift to Part L includes updated insulation requirements for new homes (assessed under a new Standard Assessment Procedure (SAP) calculation, SAP 10). For existing homes, minimum new fabric efficiency standards will now apply if new or replacement thermal elements, such as windows and doors, are introduced to existing homes, aiming at energy loss through the building fabric (U-values). There is also new guidance for glazing in extensions, improvements for lighting design (which take no account for the need to adjust 24-hour lighting levels or lighting efficacy calculations for health) and a new maximum flow temperature requirement for a central heating system (55°C instead of over 75°C).

The main intention of Part O is to limit excess solar gain in new and existing homes and remove excess heat. Assessment can be done through either the Simplified Method or the Dynamic Thermal Modelling Method. A standard is also included for the maximum amount of glazing allowed in a single room. Both Part F and Part O require the consideration of the potential for noise impacts. Part F specifies recommended noise limits for mechanical ventilation operating under normal conditions, which can be achieved through appropriate design and installation. It also requires assumptions on whether openable windows are appropriate for purge ventilation to take into consideration the level of external noise. Part O states that the overheating mitigation strategy should take account of the likelihood that windows will be closed during sleeping hours if noise from outside exceeds specified limits. These are good examples of safeguards that reduce the risk of unintended consequences by encouraging a multi-pollutant assessment.

The Future Homes Standard will set out energy and ventilation standards for non-domestic buildings and existing homes and includes proposals to mitigate against overheating in residential buildings. The new Future Homes Standard should ensure that all new homes built from 2025 will produce 75% to 80% fewer carbon emissions than homes delivered under current regulations. However, the greatest challenge is not in setting but in complying, monitoring, and enforcing new standards.

The Scottish Government recently introduced major changes to the Scottish Building Standards Technical Handbooks for domestic and non-domestic buildings, which came into force on 1 February 2023 ([17](#)). These updates include significant changes to Section 3 (Environment), which includes guidance for ventilation systems and new standards for overheating; Section 6 (energy), which includes a 32% reduction in carbon emissions over previous standards, tighter limiting fabric standards, mandatory airtightness testing in all homes and adoption of SAP 10 methodology, and Section 7 (sustainability), which changes guidance of CO₂ emissions ([17](#)).

2.2 Energy efficiency measures

The UK building stock is among the oldest in Europe, with half of all non-domestic premises built before World War 2. The number of homes increased from 18.8 million in 1970 to 27.8

million households in 2020, which included an increase of 5.9% over the last 10 years alone (18). The use of materials and building practices have changed over time, resulting in general building archetypes. From the late 20th century onwards, these comprise standard clay cavity brick wall construction, modern reinforced concrete and steel structures and a growing use of glazed fabrics in multi-storey buildings (19). Some retrofit uses external cladding, which has been shown to be a fire hazard. The 'Building a Safer Future' report was followed by a ban in England on the use of unsafe aluminium combustible materials (ACM cladding) in December 2018, in high-rise residential buildings. One study, applying a GIS-based domestic energy map, identified that approximately 75% of 431 dwellings in Oxford were suitable for a whole house retrofit package, which would result in around 90% mean energy reduction over baseline (20). In addition, 1930s semi-detached homes in areas with low household income were identified as having the greatest need for retrofitting, followed by 1930s terraced housing, in areas with median level of household income (20).

Mitigation measures have been proposed for existing and newly built homes that would help prepare the UK building stock for the impacts of climate change and enable the UK government to meet its legally binding emissions targets by 2050 (11). For existing buildings, these include insulation of external walls, draught proofing of the building envelope, double or triple glazing with shading, low-carbon heating with heat pumps, highly energy-efficient appliances and water-efficient devices, green space and flood resilience and resistance. For new homes, these include high levels of airtightness with mechanical ventilation and heat recovery, cooling measures, triple glazed windows and external shading, low-carbon heating and shift to electrification, water management and flood resilience and resistance.

Achieving net zero targets require large-scale retrofits of homes to reduce energy demand. Current technology and energy efficiency measures include retrofit of the building fabric (such as loft, cavity, wall and floor insulation, draught proofing and upgrading windows to highly efficient double or triple-glazed) to minimise unwanted heat losses, using low-carbon technologies for heating (MVHR and cooling, replacing natural gas boilers with heat pumps, heat networks, smart electric heating and hydrogen boilers) and exploiting solar energy (21), and best use of daylight and energy-efficient lighting. These interventions can help new and existing homes to transition to low-carbon and ultra-energy efficiency, while reducing energy consumption through improvements can reduce energy costs and consequently fuel poverty (22).

3. Climate change, indoor air quality and health outcomes

Energy efficiency measures aiming to reduce unwanted air leakage, may increase indoor air pollutant concentrations emitted from indoor sources, including carbon monoxide (CO), particulate matter (PM), nitrogen dioxide (NO₂), chemicals such as volatile and semi-volatile organic compounds (VOCs and SVOCs), formaldehyde (HCHO), radon, and biological contamination (including allergens, viruses and bacteria, mould). They may also decrease indoor concentrations of some outdoor air-generated pollutants. The determinants of exposure to various pollutants, associated health impacts and proposed interventions are briefly discussed below, and are primarily based on the current review and have been extensively discussed in the recent reports by the National Institute of Health and Care Excellence (23), the Royal Society of Paediatrics and Child's Health (24), Defra's Air Quality Expert's Group (25), the report by the Chief Medical Officer for England (26 to 28), as well as other organisations who published guidance on IAG monitoring or sampling (Institute of Air Quality management (29); Chartered Institute of Building Services Engineers (30)).

3.1 Determinants of exposure

IAQ is affected by various factors, including ambient air or environment, urban planning and layout, indoor sources, ventilation, hygrothermal conditions, and occupant behaviours and activities (24, 31), as well as indoor air chemistry (32). The different factors affecting IAQ are reviewed below.

3.1.1 Ambient air and environment

Buildings in urban areas are exposed to air pollutants from various outdoor air pollutant sources. Of particular concern are PM and NO₂, which are generated from transport (petrol and diesel engine emissions along with tyre and brake wear), housing and industrial activities (33), as well as secondary air pollutants, such as ozone (O₃), formed through chemical reactions between other pollutants in the atmosphere. Weather conditions (including wind speed and direction, thermal stratification, heat island phenomenon) affect infiltration and ventilation. The infiltration of outdoor air pollutants defines the background concentrations of air pollutants indoors, especially in the absence of strong indoor sources. The median modelled indoor/outdoor (I/O) ratios for NO₂ for dwellings in London, for example, is 0.41 (99% CI: 0.34 to 0.59), while median I/O ratios for PM_{2.5} is 0.60 (99% CI: 0.53 to 0.73) (34). This is consistent with estimates from an earlier modelling study (35).

Radon is a radioactive noble gas that is produced by the radioactive decay of radium and uranium that occur naturally in rocks, soils and the materials into which they are made, and is also present in water and natural gas (methane, CH₄). All buildings and enclosed spaces will contain some radon (36). The highest radon levels in buildings are those in contact with

particular geologies that either contain high concentrations of radium or uranium or are porous. Reduced or unbalanced ventilation leads to increased accumulation of radon levels indoors. Basements and cellars, which by definition have ground contact with at least one wall, typically show higher radon levels than surface buildings.

Outdoor sources are important drivers for indoor concentrations of environmental biological contaminants such as fungi, pollen and bacteria. These are in turn affected by climate and seasonal variations, with climatic changes related to temperature, humidity, rainfall, and atmospheric levels of CO₂ likely to affect the species distribution and growth rates. For example, plants can produce more pollen at elevated levels of atmospheric CO₂, which also increases spore production in some fungal species, with increases observed at higher temperatures (37, 38).

3.1.2 Urban planning and urban layout

Urban planning and urban layout define air pollutant emissions near the ground, as well as dispersion in urban areas; some urban layout types (such as street canyons) can trap air pollutants limiting dispersion. The location, type and number of pollution sources within an urban area (for instance junctions, combustion plants and ventilation discharges) affect air pollutant levels in building façades, together with building location, size and orientation in relation to other buildings. Some shapes of buildings, such as tall buildings or those with courtyards or enclosed spaces, have more marked effects than others on dispersion of local pollution sources (39).

3.1.3 Indoor sources

Method of cooking (both the fuel and the way that food is prepared (frying or boiling)) is an important indoor source of PM, NO₂, VOCs and other pollutants, whose concentrations can vary dramatically from one home to another, depending on occupant activities (40). Carbon monoxide (CO) may be generated from malfunctioning fuel burning stoves (wood, kerosene, natural gas, propane), fuel burning heating systems (wood, oil, natural gas) and from blocked flues connected to these appliances. Appliance malfunction may be due to faulty installation or lack of maintenance and proper use (41).

The primary particle emissions from cooking may grow into a specific particle size and disperse within the home where they can take up SVOCs from consumer products (such as personal care and cleaning) and building materials. In addition, the volatile fraction of cooking emissions can undergo reactions indoors that may produce particles, whereas a large fraction of indoor PM from cooking is likely to deposit on indoor surfaces (42). Apart from cooking, other indoor sources of PM include vacuum cleaning, dusting, smoking, incense and candle burning.

Indoor CO concentrations are dominated by infiltration of outdoor air and, in the absence of indoor sources, indoor concentrations will follow those outdoors, as CO is not deposited indoors, but with a time delay of 20 to 30 minutes (35). A monitoring study shows that there is a

correlation between NO₂ and CO in homes with the highest readings, where gas was the main fuel for cooking and heating (43). The dwelling type, main fuel type, floor area and how well ventilated a home is, define the CO exposure from indoor sources; bungalows, terraced homes, and flats are typically found to have higher indoor levels, whereas spaces with working extractor fans for gas cooking have significantly lower CO exposure (44). A comprehensive year-long monitoring study in a very large number of UK homes reported mean I/O ratios for NO₂ of 0.6 to 0.7 in homes without gas cooking, but 1.4 for kitchens and 0.9 for living rooms in homes with gas cookers (45).

Apart from the cooking activity, chemicals (VOCs, SVOCs and HCHO) are widely used in construction and building products (such as insulation materials, paints, varnishes, waxes, solvents), in household consumer products (for instance, detergents, cleaning products, air fresheners and personal care products) and are also emitted while using electronic devices such as photocopiers or printers (19, 46 to 48). Public Health England (PHE) published UK indoor air quality guidelines for 11 selected VOCs for the first time (49) which are cited in the revised building regulations Approved Document F that allow the designers “to assess ventilation strategies against the individual VOCs informed by PHE”, given appropriate source control in the first place (13).

3.1.4 Ventilation

A fundamental way to maintain good IAQ is ventilation. However, ventilation is hard to simplify. If the ventilation rates are too low, indoor air pollution sources will dominate, but if they are too high, it will consume excess energy and outdoor pollution sources will dominate (42). The installation, operation and maintenance of the ventilation system determines its effectiveness. Mechanical ventilation systems include mechanical extract ventilation (MEV), MVHR, and demand-controlled ventilation (DCV). The golden rule has always been “build tight and ventilate right”, essentially meaning that all buildings should have purpose-provided ventilation rather than relying on infiltration of air.

Background ventilators (such as trickle vents and air bricks in walls or windows) are natural ventilation devices and a supplement to operable windows. Their main performance concerns are the ventilation rate, thermal insulation, acoustic resistance, water tightness, and air permeability; therefore, the trickle vents can affect energy performance in buildings and compromise the thermal comfort of occupants (50). A modelling study (51) showed that more than 98% of English houses are too airtight to sufficiently dilute PM_{2.5} concentrations below the WHO guideline of 25 micrograms per cubic metre (µg/m³) (at the time of the publication; currently 15µg/m³) solely through background ventilation. Controlled ventilation is required in all domestic kitchens, while ventilating during cooking plus 10 minutes after has a significant effect.

Various studies evidence the prevalence of poor ventilation in homes (52). In a monitoring study for the Ministry of Housing, Communities and Local Government (now the Department for Levelling Up, Housing and Communities, DLUHC), only a small number of naturally ventilated homes met the minimum ventilation provisions recommended in Approved Document F (43). In

homes with continuous mechanical extract, only one home met the guidance published in Approved Document F with respect to both continuous extractor fan air flow rates and trickle ventilator provision, with the extractor fan flow rates being lower than those recommended (43).

3.1.5 Hygrothermal conditions

Hygrothermal conditions indoors are affected both by outdoor conditions and occupant activities (such as heating and moisture production), building characteristics (insulation or cold surfaces), and water leaks (from indoor and roof pipes) that may increase damp, and ventilation which could dilute indoor sources of moisture. However, poorly maintained or designed mechanical ventilation or air conditioning systems may increase the risk of biological contamination indoors.

Besides the direct impacts of climatic changes on outdoor and indoor hygrothermal conditions potentially affecting the species distribution and population growth of biological contaminants, indirect effects are also important. For example, wetter winter conditions could lead to indoor damp, whereas higher outdoor temperatures may increase the take-up of mechanical ventilation or air conditioning, which in turn may increase the risk of biological contamination if the systems are not suitably installed or maintained (53).

Biological contamination in buildings includes a variety of pollutants; this section largely discusses house dust mites (HDM), fungi (mould), and bacteria. Other biological contaminants related to insects, vermin, allergens from pets or indoor airborne transmission of infectious diseases are not discussed here. Hygrothermal conditions indoors, including within microclimates of habitats such as carpets, mattresses, soft furnishings and surfaces are also important determinants of contamination from fungi and dust mites which thrive in humid and warm environments, with some variation across species; for example, *Dermatophagoides pteronyssinus* is more susceptible to desiccation than *Dermatophagoides farinae* (54). Furthermore, milder winters are likely to increase HDM population growth and alter species variety, whilst changes in humidity in northern latitudes will increase the numbers and species of HDMs (54). On the other hand, humidity affects the interactions between fungi and HDM, whereby relative humidity levels over 90% lead to disproportionate growth of fungi at the detriment of HDM populations (54).

3.1.6 Occupant activities

Occupants have an important role to play, as their activities may generate indoor air pollutants and moisture (23). These include cooking without using an extractor fan, cleaning without increasing ventilation, smoking indoors, drying clothes indoors, wood burning in open fireplaces, having a bath or shower without using ventilation, doing DIY without increasing ventilation, and keeping trickle vents closed or blocked (55).

Occupants may also be a source of biological contaminants indoors, for example by shedding microbes (including pathogens) or carrying them on their clothes thus moving them from one environment to another. Since contaminants arising from biological pollutants can accumulate

over time, older properties or furnishings can pose a higher risk, although cleaning practices could partly help in reducing such risk. The presence of cats or dogs in the home and high number of occupants affect concentrations of endotoxins levels in mattress dust in European settings. However, a multi-centre study found that housing characteristics and meteorological factors explained only a small proportion of the variation in endotoxin levels measured in mattresses dust across 22 study centres, with the larger factor being (high) outdoor summer temperatures (56). Other studies found that endotoxin levels in settled floor dust were also affected by building age, cleaning, presence of carpets, farm or rural living, and relative humidity, with cats and especially dogs being a major source of endotoxin both in settled dust and indoor air (57). This is an emerging field and further research is needed on mechanisms and pathways and who exactly is affected (58 to 60).

A review study concluded that households of low socio-economic status in high-income countries often experience higher levels of indoor PM, NO₂, VOCs and environmental tobacco smoke. Higher radon concentrations were found in homes with a greater material wealth; higher incomes tend to favour warmer homes and energy-efficiency measures, both of which increase indoor radon levels. Inequalities in exposures may arise via poor quality housing, a lack of awareness regarding the harm of indoor second-hand smoke, the location of housing near congested roads, and higher occupant density resulting in greater re-suspension of particles, whereas radon levels were principally explained by geological variables (61).

3.1.7 Indoor chemistry

In indoor environments, both gas-phase and surface chemical reactions may occur, which may be similar to those in the outdoor air, but occur under typical indoor conditions: less light, more available surface area for reactions, and limited timescale for reaction, due to exchange with outdoor air (62). As reported in (25), much of the indoor gas-phase chemistry is driven by oxidation reactions of VOCs, particularly with O₃ and hydroxyl radicals (OH) and to a lesser extent by nitrate radicals (NO₃) and chlorine (Cl) radicals. Whereas the OH oxidation of VOCs dominates outdoors, O₃ is a key driver for oxidation indoors, due to lower light levels; the extent of chemistry indoors can change with the location, time of year and time of day, which all affect indoor O₃ concentrations. Gas phase reactions that have received particular attention are the ozone-terpene reactions indoors; O₃ is penetrating indoors from outdoors, or is emitted from indoor sources, whereas terpenes are emitted from consumer cleaning products. Their reactions generate short-lived species (such as radicals) and longer-lived species in both the gas- and condensed-phases (63). Another type of indoor reactions are photolysis, which rely on attenuated light from sunlight outdoors, indoor lighting and UV-C sterilization devices and form key species: O₃, nitrous acid (HONO) and HCHO. Finally, heterogeneous reactions forming particles have also received attention. Particles are emitted from combustion sources (cooking or smoking) or penetrating from outdoors. However, they may also derive from chemical reactions, in which semi- or non-volatile products of the gas phase oxidation of volatile organic compounds by OH, O₃ or NO₃ transfer from the gaseous to the aerosol phase, forming secondary organic aerosols (SOAs) indoors. Type, quantity and dampness of surfaces are important drivers of indoor chemistry, both for deposition but also for reactions and for

generating new products. The presence of people has an impact on indoor air chemistry, including decreases in O₃ concentrations and increases in VOC and SOA concentrations (62).

3.2 Health effects

Systematic reviews by health organisations have highlighted the health risks associated with poor IAQ at home and school (23, 24). Both reviews revealed that indoor air pollutants, including PM, NO₂, HCHO, VOCs and biological contamination generated from indoor sources, can trigger or exacerbate asthma, irritation, other respiratory or cardiovascular conditions, and may even have carcinogenic effects. Focusing on VOCs, a recent systematic review concluded that exposure to aromatic hydrocarbons, alkanes and aldehydes are associated with respiratory health effects, exposure to some chlorinated hydrocarbons with cardiovascular neurological and carcinogenic health effects, while esters and terpenes are irritants (47).

There has been extensive and continuous work on the health effects of CO poisoning as well as efforts from the government to reduce the risk of CO exposure (64). This may be acute or chronic and can occur unintentionally or intentionally (self-harm), may have effects on the cardiovascular and neurological systems and may lead to death (41). Unintentional non-fire-related CO exposure is a serious public health issue, and faulty gas boilers in homes is the greatest source of exposure (65), where the most frequent underlying factor is inadequate ventilation of exhaust gases (66). During 2013 to 2021, there were around 20 deaths per year from accidental CO poisoning in England and Wales (64).

Reviews on the effects of exposure to solid fuel burning in higher-income countries, such as the UK, show that there is limited evidence that indoor exposure to wood burning is associated with asthma and respiratory infections in children (67), and with an increased risk of lung cancer and COPD in adults. For other respiratory outcomes, the results were inconsistent (68). According to the government's 'Environmental Improvement Plan' (69) and regarding the air quality in homes, the government is committed to "continue to tackle domestic emissions by reducing the maximum emissions for domestic burning appliances in Smoke Control Areas and by promoting best practice in use of stoves and fireplaces". UKHSA is working to develop further the health evidence associated with exposure to solid fuel burning.

CO₂ is an indicator for ventilation. However, there has been research on whether exposures to low level concentrations (below 5,000 parts per million (ppm)) found in indoor environments may cause neurological effects such as reduced cognitive performance. A recent review found conflicting evidence due to inadequate study designs (70). Existing health impacts can be indicative of inadequate ventilation, and presence of human bio-effluents and indoor air pollutants.

Radon is the largest single source of human exposure to ionising radiation for the UK population. Radon is ubiquitous but highly variable, with doses (an exposure for a duration, multiplied by a conversion factor) ranging over 5 orders of magnitude. For the average UK

resident, radon contributes as much dose as from all other radiation sources combined (71). However, a small fraction of the population will receive annual doses from radon similar to those associated with the worst nuclear events. The great majority of the UK population are currently getting modest radon doses (average of 1.3mSv per year). In more than 150,000 homes, the occupants are receiving more than 10mSv per year. In approximately 1,500 homes, the occupants are getting more than 100mSv per year, which is the order of magnitude of Chernobyl clean-up workers and would prompt evacuation after a nuclear or radiological event (Fukushima residents were evacuated at 20mSv). But as a chronic, committed dose, the effects are not immediately apparent; lung cancer risk is increased with a latency period of more than 15 years, as demonstrated in case control studies (72).

The most highly exposed individuals are at greatly increased risk of developing lung cancer, especially if they are current or former tobacco smokers (73). The lung cancer risk to all residents is proportional to the dose from radon received over a lifetime, combined with their tobacco smoking history. Radon is estimated to be responsible for at least 1,100 deaths in the UK each year (74). The lung cancer risk from radon gas itself is small, as it is usually exhaled before it can radioactively decay in the lungs. The exposure is primarily from the radioactive species created from radon decay: polonium, bismuth and lead. Changes in construction to reduce energy (through increased airtightness, window upgrades and purge ventilation, that decrease particulate matter) may reduce ventilation, leading to an increased exposure to radon, whereas unbalanced ventilation is equally bad (75).

The health effects associated with indoor biological contaminants such as fungi, bacteria and HDM, and their by-products (fungal spores, mycotoxins, endotoxins, proteolytic enzymes) can give rise to allergenic, toxic or inflammatory responses in human beings, as well as infections. Bio-contaminants primarily cause or exacerbate symptoms of lower and upper airway diseases by inducing immediate hypersensitivity (IgE) reactions, other types of immunologic responses, or infection (76). Besides respiratory problems, other health outcomes could include atopic eczema for HDM (77), whereas for fungi, a variety of non-specific symptoms have been reported, including fatigue and headaches, although the evidence for these, as well for links to cancer, is inconclusive (78).

Various studies have found associations between respiratory health outcomes and markers of dampness or moisture in buildings such as visible mould, mould odour, or moisture in the walls (for example (79)). However, further research is needed on the specific causal mechanisms for these findings (80), with a lack of health-related thresholds for moisture in buildings (81).

Overall, those most at risk from biological contaminants in indoor air are children (including prenatal exposures), people with pre-existing conditions affecting the respiratory or immune systems, with some evidence that gene-environment interactions may modulate health effects and therefore some environmental interventions may be more effective for some people or settings compared to others. Quantification of the likely health risks arising from the impact of climatic changes on biological contaminants is challenging, since some of the underlying mechanisms are not fully understood, nor are there established health-based thresholds.

3.3. Interventions for indoor air quality

Interventions are used to prevent emissions or remove indoor air pollutants. The hierarchy is first to control the emission sources and then to apply ventilation to maintain good IAQ (23). According to Nazaroff, the “12 words to improve IAQ are: minimise indoor emissions; keep it dry (relative humidity: 40% to 60%); ventilate well; and protect against outdoor pollution” (42). Changes to the hygrothermal properties of building fabric can cause condensation, mould growth and decay. The majority of adverse health effects caused by relative humidity would be minimised by maintaining indoor levels between 40% and 60%, which is the best range for healthy work performance (82, 83). This may require mechanical intervention to humidify or dehumidify the air.

There is on-going research on source control and ventilation, aiming to improve IAQ, as discussed below.

3.3.1 Ventilation

The effectiveness of ventilation in removing various types of pollutants is demonstrable (84, 85). Wargocki reported that ventilation rates below 0.4 air changes per hour (ach) are detrimental to health but identified difficulties in demonstrating causality (86). The EU-funded HealthVent project recommended a health-based airflow rate of 4 litres per second per person (l/s/p), if the indoor sources are eliminated and the World Health Organization (WHO) IAQ guidelines are met, but it would only remove emissions from the presence of occupants (exhalation) (87). A randomised clinical trial to install mechanical ventilation to improve ventilation by removing pollutants and controlling moisture found wheezing decreased in children (88). There are certainly benefits by increasing ventilation rates, but there are also potential energy penalties. Whilst a Dutch study found that mechanical systems with heat recovery can provide increased ventilation rates and improve heat recovery, there are also unintended consequences such as noise from the system, which may be an annoyance or result in the system being turned off (89). During the COVID-19 pandemic, poor ventilation was identified as a risk for far-field virus transmission and improving ventilation was identified as mitigating measure (90).

3.3.2 Active air cleaning technologies

Methods of air cleaning include carbon filters for O₃ removal (91); clean-air heat pump (CAHP) system for NH₃ removal (92); air cleaners for pollen reduction (93), for VOCs removal (94), HCHO removal (95) and PM removal (96 to 103); activated carbon filtration in the HVAC system for O₃ (91), photocatalytic cleaners (104 to 108) for PM and VOC reduction. Filters reduce PM_{2.5} concentrations and are consequently expected to improve health (109 to 111) but aetiology is often unclear. Vulnerable population groups may benefit most from air cleaning (112 to 114), and these systems are predicted to improve population health when used in homes (115, 116) and schools (116), giving cost benefits (117, 118). Evidence for the effectiveness of some technologies is limited in some cases and may generate secondary chemical products (111). Gas-phase cleaners, for example, can create secondary contaminants (119) and there is no

accepted standard for testing and operating air cleaning devices, which would be required for wider statutory adoption.

3.3.3 Plants

Some studies show that potted plants are effective in removing PM ([120](#)) and VOCs ([121](#)), but our understanding is immature ([122](#)), whereas other studies find no improvement in IAQ ([123](#)). All remove CO₂ to some extent, which is problematic when used to indicate ventilation rates ([124](#), [125](#)). The ability of house plants to clean air is dependent on species, root area, soil type, and foliage surface area. There is no standard procedure for quantifying contaminant removal rates by indoor house plants.

3.3.4 Passive removal materials (PRMs)

Passive removal materials (PRMs) refer to wall materials and coatings. The high reactivity of O₃ and its interactivity with room surfaces makes PRMs a viable removal mechanism. The most promising PRM materials are clay bricks, plasters, calcareous stones, mineral fibre or volcanic perlite tiles and sealants. The cTrap cloth is a sealant, an emission barrier that contains 2 active layers; one adsorption layer and one hydrophilic polymer layer, which when attached to indoor surfaces can effectively reduce emissions of a range of VOCs (for example, alcohols, aldehydes, sulphur compounds, polycyclic aromatic hydrocarbons (PAH), chloroanisoles, chlorophenols) ([126 to 128](#)). However, HCHO is a problematic bi-product ([129](#)). Hempcrete, a concrete-like building material with a hemp base, naturally regulates moisture and temperature more efficiently than concrete ([130](#)). Heating dissipates stored contaminants ([131](#)). Technologies are immature and performance and implementation regulation is needed.

3.3.5 Behavioural interventions

As the climate changes and while solutions are proposed for control of emission sources and provision of adequate ventilation, an integrated approach to improve IAQ and occupants health and wellbeing needs to be considered; this takes into account not only the role of building designers, managers and owners but also the role of occupants ([28](#), [132](#), [133](#)). Behavioural interventions to improve IAQ are analytically reported in the literature ([23](#), [25](#), [28](#), [134](#), [135](#)) and summarised here.

Indoor air quality can be improved by changing certain occupant behaviours or habits; by refraining from smoking and vaping indoors, and from using solid-fuel fires or free-standing gas heaters where possible or using these with increased ventilation. The latter is also required to remove additional moisture generated from normal occupant activities, such as drying clothes indoors, cooking, having a shower or bathing, which lead to damp and mould issues. Release of chemicals can be reduced by reading and following guidance on how to use cleaning and personal care products and by using low emission materials for decorations and furnishings (for example, paints, furniture and flooring materials), where, and if, possible.

Efficient measures to remove indoor air pollutants and moisture include the use of provided background ventilation (most commonly trickle vents), externally extracting mechanical fans in the kitchen and bathroom, which are operated during the activity, as well as windows opening, where appropriate due to outdoor air pollution and if is safe, due to security issues. The maintenance of mechanical systems, by regularly cleaning or replacing filters, can ensure their effectiveness. Where ventilation is restricted, using portable air cleaning systems, such as fans with HEPA filters or UVC systems can reduce particulate pollution.

4. Climate change, building overheating and health outcomes

4.1 Determinants of exposure

Below is a review of some of the factors driving indoor overheating risks in buildings.

4.1.1 Building location and the surrounding microclimate

Across the UK, the magnitude of overheating risk varies, with London and the South of England being at highest risk ([11](#), [136](#)). Several studies have indicated that homes in colder regions experience indoor overheating even under the current climate ([11](#), [137](#), [138](#)). Urban dwellings are generally more prone to overheating due to the urban heat island (UHI) effect, a well-established phenomenon whereby central urban areas can be around 4°C to 5°C warmer than their outskirts, with the difference exceeding 10°C in some cases ([139](#)). Excess heat-related mortality has been higher in London compared to other UK regions during heatwaves ([140](#), [141](#)). Importantly, dwelling types that are more likely to overheat due to their building characteristics, such as flats, are often located in the warmer parts of a city, further exacerbating their overheating risk ([142](#), [143](#)).

Location of a dwelling unit or room within a building can also affect overheating risk ([144](#), [145](#)). Purpose built flats, in particular top floor flats, are commonly identified as more prone to overheating compared to flats at lower floors ([146 to 149](#)). Smaller flats are also less likely to offer a 'safe haven' during periods of hot weather, that is, a room that remains cooler for parts of the day ([143](#), [150](#)). Overheating appears to be more prevalent in bedrooms during the night, rather than in living rooms during the daytime ([151](#), [152](#)), although this varies by dwelling type and construction age ([153](#)).

4.1.2 Building geometry

Building geometry, including building size, form, massing, orientation, layout, proportion of transparent elements and shading can affect the level of exposure of the building fabric to solar radiation and resulting solar gains ([145](#)). These factors will also affect the potential for convective heat losses through the building fabric. Heat loss occurs primarily through opening windows, which is currently the main cooling strategy in UK dwellings. Apart from shading, and to a certain degree interior layout, elements of building geometry are largely determined by early-design stage decisions, highlighting the importance of early-stage design for overheating prevention. Smaller, purpose-built flats and terraced houses are more likely to overheat than detached houses ([142](#), [143](#), [147](#), [150](#), [154](#)). New builds commonly feature large, glazed areas prone to overheating, especially if unshaded or south or west facing ([155](#)). However, there are also numerous dwellings prone to overheating, particularly urban flats, due to minimal window openings or difficulty leaving open securely at night ([156](#)).

4.1.3 Building thermal characteristics

Thermal characteristics of buildings, including thermal reflectivity (albedo), absorptivity, insulation, air permeability, and thermal mass, can modify both heat gains and losses in buildings. For instance, low albedo is associated with high indoor temperatures due to increased solar heat gain absorption ([155](#), [157 to 161](#)). Thermally lightweight structures are found to overheat more quickly during the day ([155](#), [162](#), [163](#)). Buildings with higher thermal mass have been found to lead to more stable indoor temperatures, though this should also be coupled with appropriate ventilation so that any build-up of heat indoors can be effectively removed.

Achieving high energy efficiency through increased thermal insulation and air permeability is crucial to reduce winter carbon emissions associated with space heating. However, thermal efficiency features, typically associated with more recently constructed dwellings, have been identified as potentially contributing to summertime overheating risk ([5](#), [138](#), [151](#), [162](#), [164 to 167](#)). Crucially, this is mainly due the absence of appropriate ventilation, shading or other passive cooling strategies ([147](#), [156](#), [159](#), [167 to 171](#)). Wall insulation positioning can also be important, with internally positioned insulation leading to higher overheating than externally placed insulation ([147](#), [172](#), [173](#)).

4.1.4 Internal heat gains

At the household level, metabolic heat gains can be generated by occupants and other internal sources related to occupant behaviour, such as lighting, cooking, and use of appliances. In blocks of flats, significant internal heat gains have been observed in corridors and other communal areas as the result of waste heat from domestic hot water distribution or communal heating systems ([156](#), [174](#)).

4.1.5 Household socioeconomic profile

Social housing tenants, lower income households and vulnerable individuals (older, disabled or suffering from long term illnesses) are often found to experience higher overheating risks compared to other tenure types or the rest of the population ([143](#), [153](#), [175](#)). It is likely, however, that these factors are correlated with other overheating determinants, such as dwelling type, location or limited thermal adaptive capacity.

4.2 Health impacts

The epidemiological relationship between excess or prolonged heat exposure and adverse health and wellbeing effects is well established ([176 to 179](#)). These impacts include a range of symptoms, such as heat cramps, heat exhaustion, heatstroke, hyperthermia and even death and suicide risk ([180](#), [181](#)). Certain sociodemographic groups are expected to be more severely affected, including older, very young, immunocompromised and individuals with physical or mental health conditions ([8](#), [180](#), [182](#)). People suffering from cardiovascular, respiratory,

cerebrovascular and diabetes-related disease are particularly at risk ([181](#)). People with low mobility or who are bed-ridden may be particularly at risk due to their limited ability to adjust their environment during hot spells ([175](#)), while living alone at home has also been identified as a heat vulnerability factor in some studies ([177](#)).

Although more research is required to understand the impacts of indoor heat exposure in UK homes on health and wellbeing ([183](#)), a recent systematic review of international literature has identified worsening of respiratory, dementia and schizophrenia symptoms when indoor temperatures were above 26°C ([184](#)). Indoor overheating can negatively impact sleep quality, with subsequent adverse effects on wellbeing, productivity and risk of accidents, and it has been suggested that elevated night-time bedroom temperatures can contribute to heat-related morbidity and mortality ([183](#), [185](#)).

4.3 Interventions for building overheating

As indoor overheating is projected to become more frequent in the UK, adaptations are needed to mitigate risks to health ([5](#), [11](#), [183](#), [185 to 187](#)).

At the country-, city-, and neighbourhood-level, adaptative measures can include heatwave planning and response ([188](#)), public education campaigns ([189](#)) and the creation and improvement of green and blue infrastructure, such as trees, parks, ponds, green roofs and walls ([160](#), [162](#), [189 to 192](#)). More details on adaptive measures for outdoor environments can be found in Chapter 4.

At the building-level, it is crucial to consider indoor overheating mitigation at both the design and refurbishment stage to prevent lock-in design decisions that may result in high summer temperatures ([148](#), [193](#)). While retrofitting the existing housing stock may increase building energy efficiency, and thus decrease winter heating demand, either active or passive cooling strategies should be implemented to avoid extreme risk of overheating ([165](#)). Air conditioning (systems that manipulate the moisture content of supplied air, AC), comfort cooling (systems that only manipulates temperature of supplied air), mechanical fans, and heat pumps, are all considered active cooling, which rely on external energy supply for heat transfer. In the UK, between 2% to 5% of homes are currently estimated to have some form of portable or fixed cooling system ([194](#)) although this may increase in future warmer years, especially following the record-breaking outdoor temperatures in summer 2022 ([189](#), [194](#), [195](#)). While AC can help manage indoor temperatures during periods of warm weather, it further contributes to a warming climate by consuming energy, especially if non-renewable energy sources are used, and can put extra strain on the electrical grid ([195](#)). Its use may also impose an economic burden on households and exacerbate summertime fuel poverty ([5](#)). Furthermore, running a typical standard AC unit (without heat recovery) can contribute to the UHI effect through the release of waste heat outside of dwellings, potentially increasing overheating risk for nearby households ([177](#), [189](#), [196](#)).

Passive cooling measures can protect, modulate, and dissipate heat with minimal energy consumption ([194](#), [197](#)). The new approved Building Regulations for overheating mitigation (Approved Document O) specify that passive measures should be prioritized over mechanical systems ([15](#)). The suitability of passive cooling strategies will depend on many factors, including geography and climate, building geometry and thermal characteristics, as well as occupant needs and behaviours ([145](#), [197](#)).

Natural ventilative cooling is effective in the UK, due to a sufficient diurnal temperature difference for night ventilation to have a cooling effect ([194](#)). However, its effectiveness will likely decrease as the climate warms ([168](#), [196](#), [198](#)). A gap is often observed between ventilation design intentions and occupant ventilation behaviour resulting in increased overheating ([8](#), [199](#)), highlighting the importance of education around the use of passive cooling strategies in a warming climate ([155](#), [189](#), [198](#), [200](#)). Hybrid solutions, with passive and active measures working synergistically may be needed in the future ([201](#)).

External shading (such as external shutters, window overhangs and brise-soleil) have been shown to reduce overheating and associated heat-related mortality under current and future climate scenarios ([145](#), [148](#), [154](#), [165](#), [167](#), [172](#), [198](#), [202 to 204](#)). It is estimated that if the West Midlands dwelling stock was adapted with external shutters, which were closed during daytime, heat-related mortality could decrease by 60% in current summer conditions, 30% during current heatwave conditions, and 37% to 43% in weather conditions representative of 2030s, 2050s and 2080s summers within the A1B future climate scenario ([154](#)). However, the technical feasibility of external shading may be limited in the UK, as many existing dwellings have windows that open outwards ([5](#), [143](#)). Internal shading, such as blinds, can reduce internal temperatures at a lower cost but have been found to be less effective than external systems because solar gains have already been transmitted through the glazing ([155](#), [172](#), [194](#), [205](#)).

Green roofs and façades can reduce cooling demand, stabilize indoor temperatures, and reduce the UHI effect. They do this by providing an additional layer of building insulation and shading, and through evaporative cooling, absorption and reflection of solar radiation ([167](#), [192](#), [194](#), [206 to 209](#)). Effective integration of green roofs in the UK would need to consider local climate, building infrastructure, and maintenance needs and costs when selecting substrate, plant species, and their design (such as extensive (shallow soil systems) versus intensive (deep soil systems)).

Reflective coatings applied to roofs and façades (that is, white or super cool coatings) can also reduce indoor temperatures, cooling demand ([154](#), [157](#), [158](#), [161](#), [198](#)), and the UHI effect ([210](#), [211](#)) by reflecting solar radiation away from the dwelling. However, a consideration for colder climates, such as the UK, are the impacts of reflecting solar radiation year-round, including desirable heat in the winter ([5](#), [154](#), [157](#)).

At the individual-level, people can adapt to overheating behaviourally, through adjusting clothing or window opening, or physiological changes, sweating and metabolism ([200](#)). How people occupy and operate in a space can impact the effectiveness of other building- or city-level

interventions, which is further influenced by surrounding environmental, social, and demographic factors and knowledge and awareness of precautionary measures ([177](#)). For example, window opening behaviours are influenced by indoor and outdoor temperatures, perceived security (relevant for ground level apartments), safety (such as window restrictors to reduce fall risks), as well as environmental conditions such as outdoor air and noise pollution ([147](#), [169](#), [212](#), [213](#)). Furthermore, having reduced mobility can limit people's ability to adjust their immediate environment (such as opening windows), clothing, and activity levels ([170](#)). Whether people install and use adaptive measures is also influenced by cost, preparedness and knowledge of those systems ([199](#), [214](#)).

In summary, a combination of adaptation measures is required to minimise the risk of indoor overheating in UK residential settings. Given the complexity of the problem, a holistic approach to designing and retrofitting dwellings is required. This approach should consider the cooling energy burden of active measures; installation costs, planning restrictions, feasibility and effectiveness of passive measures; and occupant behaviours and needs, whilst ensuring that other environmental conditions are not compromised.

5. Climate change, noise and health outcomes

5.1 Determinants of exposure

Whilst some sounds can promote good health and improved quality of life ([215](#)), noise is unwanted or harmful sound ([216](#)). Noise exposure indoors can be due to indoor sources or from the ingress of noise from outdoors or adjacent buildings. Here, indoor sources of noise refer primarily to mechanical systems that are required for a safe and healthy indoor environment, such as ventilation, heating and cooling systems. Outdoor sources of noise include transport, external building services, construction, and industry.

A building's siting, orientation, façade construction and ventilation strategy play a significant role in determining occupants' exposure to noise from external and internal sources. The need for ventilation can be at odds with reducing exposure to noise and may influence ventilation behaviours. Occupants may be reluctant to open windows and doors to ventilate dwellings in noisy environments, which can impact indoor overheating and air quality ([169](#), [213](#), [217](#), [218](#)). This conflict may also worsen over time as the need for ventilative cooling increases with a warming climate. Mechanical service systems are designed to regulate indoor temperatures and improve air quality but if not designed, installed and maintained properly, they can be sources of noise ([219 to 224](#)). Indoor noise generated by mechanical ventilation units may be particularly noticeable in situations where there is low background noise, such as in a modern dwelling with a well-sealed façade, or particular times of the day ([225](#)). There is some limited evidence from the UK that noise from mechanical ventilation units can reduce indoor perceived acoustic comfort ([226](#)), and can affect their use, such as occupants turning the units off or lowering the operating level ([199](#), [227](#)). However, there is still a lack of good quality evidence on the exposure levels and sound characteristics of mechanical ventilation noise that occupants may find acceptable in the UK ([225](#)).

5.2 Health impacts

Exposure to environmental noise has well-established detrimental impacts on psychological and physiological human health, such as sleep disturbance and cardiovascular diseases ([228](#)). The etiological pathways might be the repeated stimulation of the sympathetic nervous system, hormonal imbalances, and noise-induced sleep fragmentation ([229](#), [230](#)). The WHO has set guidelines for the European Region to limit health impacts from exposure to transport (road, railway and aircraft) and wind turbine noise. Since the publication of the WHO guidelines ([228](#)), the evidence for adverse health impacts due to noise has continued to grow rapidly, particularly for cognitive impacts and cardiometabolic diseases ([231 to 237](#)), including for sources other than transport, such as neighbour noise ([238 to 241](#)). Most epidemiological evidence is in relation to long-term averaged sound levels predicted or measured outside the façade of a

dwelling. However, emerging evidence suggests that observed associations between noise and health outcomes are more robust when linked to indoor exposure ([242](#)).

The health impacts of exposure to mechanical ventilation noise is still a poorly understood problem, especially as annoyance and sleep disturbance are likely to be influenced by not just time-averaged levels, but also sound quality ([243 to 245](#)).

Inequality and inequity in health impact can arise from several factors, including exposure disparities, vulnerability and affordability. The limited evidence available suggests that the relationship between environmental noise exposure and socio-economic status in England is complex, varying by source of noise ([246](#)) and region ([247](#)). Vulnerability to environmental noise exposure can arise from social, environmental or biological determinants, or the combination of the 3 determinants ([248](#)).

5.3 Interventions for noise

Climate change mitigation and adaptation policies are likely to lead to changes in building design and refurbishment that can have both a positive impact as well as unintended consequences on indoor sound exposure. These impacts may arise because of changes to the building fabric, which provides a degree of protection from external noise sources, as well as from new sources of internal and external sound.

Properly designed and installed thermal insulation measures may also improve the acoustic insulation performance of the building fabric (windows and walls, including through improvements of airtightness), which can further improve acoustic insulation to outside traffic and neighbour noise ([249 to 253](#)). However, there is still limited evidence on the effectiveness of insulated windows and walls for improving subjective responses of indoor acoustic comfort and reducing annoyance from environmental noise, particularly from a UK context ([254](#)). Interventions that increase airtightness should not inadvertently worsen indoor air quality or increase the risk of overheating, and solutions that include mechanical ventilation or cooling should factor in noise emissions in the design, installation and maintenance of such systems ([225](#)). Considerations should also be given to the lifecycle carbon and environmental cost of thermal and acoustic insulation materials ([255 to 257](#)).

Sound attenuating modifications can be applied to the building envelope to help address the competing needs for ventilation, cooling, and quiet. These include modifications to balconies ([253, 258 to 261](#)), eaves or louvres ([262](#)), solar shading infrastructure ([262 to 265](#)), external shutters ([266](#)), and vents ([267, 268](#)). Special windows have been developed that allow for natural ventilation while also attenuating outdoor noise ingress ([259 to 261, 269 to 274](#)). However, more research is needed to demonstrate their acoustic and ventilative performance in a UK context.

Green roofs and façades can improve the indoor sound environment through external noise reduction ([275 to 278](#)). Building envelopes are typically acoustically hard, and as a result, sound is reflected and then amplified between nearby buildings and street surfaces ([277 to 279](#)). If designed properly, green roofs and façades can reduce indoor noise exposure by lowering the acoustic intensity incident on façades from outdoor sources ([280 to 284](#)). The acoustic attenuation performance depends upon many factors, including substrate material, moisture content and vegetation type. Green roofs and façades can make desirable sounds, such as nature-based sounds, more noticeable ([280](#)), can decrease the perceived loudness of traffic noise ([279](#)) and reduce noise annoyance ([285, 286](#)).

6. Flood and water damage and IAQ

6.1 Determinants of exposure

The risk of flooding to people, communities and buildings is one of the most severe risks from climate hazards for the UK population, both now and in the future (5). There are now known to be just under 1.9 million people in the UK exposed to frequent flooding from either fluvial, coastal or surface water flooding. Approximately 82% of those at risk are in England, 8% in Wales, 8% in Scotland and 2% in Northern Ireland (287). Flooding is expected to increase significantly across the UK as climate change leads to more frequent heavy rainfall, especially in winter, due to the warming of the atmosphere which leads to more water vapour content and hence more precipitation. Increases in both fluvial (river) and pluvial (surface water) flooding will occur as well as more coastal flooding due to rising sea levels from increasing temperatures and melting land ice.

Moisture damage of buildings arising from extreme weather events such as flooding and hurricanes can increase dampness in buildings and associated biological contaminants such as fungi and bacteria; post-hurricane clean-up and reconstruction exposures can increase the risk for lower respiratory symptoms (288). As such, wearing protective equipment during clean-up activities can be important, particularly for immunosuppressed residents (289). Increased occurrence and severity of driving rain can increase the risk of moisture damage and associated biological contamination in buildings, depending on the construction details of the building's fabric (290, 291).

6.2 Health impacts of floods

The health impacts as a result of indoor flooding were summarised previously (4), and are covered in more detail in Chapter 3. They include CO poisoning occurring after flooding, when generators or fuel-powered equipment are used indoors for drying or pumping out flood. The persistence of flood-borne microorganisms on building surfaces, depending on the level of sewage contamination of the water and the drying rate of the surface, and the food and water contamination by bacteria, sewage, agricultural waste or chemicals during flooding events lead to infection risk. Mould species, such as *Cladosporium*, *Aspergillus*, *Penicillium*, *Alternaria*, and *Stachybotrys* species of fungi have all been observed in flooded dwellings, whereas damp indoor environments have been associated with respiratory health problems. Most health impacts in England are associated with mental health such as psychological distress, probable anxiety, probable depression and probable post-traumatic stress disorder.

6.3 Interventions for flooding

Considerable advances have been made regarding the strategic management of flood risk at national and local levels in recent years, including the promotion of a shift from physical

protection to adaptation and resilience (5). Since April 2016, insurance has been made available for all properties that have been flooded in the past, with nearly half a million households now covered (292). The company has supported the concept 'Build Back Better' to ensure that further floods have much less impact. Flood Re are also supporting the idea of flood performance certificates being issued to properties liable for flooding to act as an incentive for owners to take preventative measures, as well as alerting prospective buyers to the state of preparedness (293).

7. Lighting

7.1 Determinants of exposure

Daylight consists of light at wavelengths across the visible spectrum and beyond. It has many advantages over electric light: it is free, ubiquitous, abundant, well-timed (most of the year) and practically flicker-free. Whilst direct sunlight can cause glare, indirect natural light through windows does not. Daylight also provides higher levels of illumination near windows than can be economically created with electric lighting and requires no direct electrical energy input. Windows and glass doors are the most common means of admitting daylight into homes, whilst selectively blocking short wavelength ultra-violet light. Infra-red filters can now be used to block 2-way radiative heat transfer through window glass.

7.2 Health impacts

Over the last 25 years, it has been increasingly recognised that illumination for vision has a different spectral requirement to the light that is essential for human health. In particular, there is established evidence of the effects of light on the timing and health of circadian rhythms – as light can either be to maintain or disrupt circadian function, depending on timing, intensity and several other factors – and on sleep and long-term health, for example ([294 to 300](#)).

Evidence relating to other photobiological effects of daylight is emerging, such as its role in reducing myopia in children, and on blood pressure. Although there is no consensus on lighting for these effects, it is often suggested that there are benefits from higher illumination during the day. In addition, with age the lens becomes gradually less transparent and there is also an increase in visual impairments; both age and visual impairment may further increase the need for better lighting ([301](#)).

To summarise, the health aspects of lighting call for day-occupied spaces with adequate daylighting, possibly different characteristics of artificial lighting for daytime, evening and night use, controls over direct sunlight, and the means to remove any unwanted light in the evenings and night. Many people also benefit from the natural prompt of the morning daylight, so passive black-out solutions may present barriers to healthy morning exposures.

There is a current lack of requirements for lighting and health in the design of homes, but experts recently agreed recommendations for adult exposures ([302](#), [303](#)). As a brief summary, lighting should be brighter and closer to a daylight spectrum during the day ('bluer') – including the contribution of daylight – but dimmer and warmer ('redder') in the evening before bed, with darkness whenever possible overnight. Following these health recommendations will potentially have significant implications for energy use of buildings and the assessments of energy efficiency, including where electrical lighting needs to be increased during the day or increased in the evening, and where increasing daylighting changes the thermal properties of the design.

As a result, there is a risk that projected reductions in power consumption from lighting may not be fully realised.

7.3 Interventions for lighting

A spectral weighting function, allowing only for visibility or visual brightness, is used to calculate light output from electrical lighting, and energy efficiency is then obtained by dividing by the power consumed. But lighting should have a balance of wavelengths to achieve an acceptable colour and for colour rendering quality, which has cost implications on energy efficiency. Although the highest efficacy might be assigned to a green wavelength, a strongly coloured green light will not be acceptable, and so maximum energy efficiency is not feasible in practice.

In addition, the lighting energy efficiency assessments outlined above rely almost exclusively on luminous energy efficiency, that is, visual brightness, whereas light has several beneficial and detrimental health effects with other spectral dependencies. As energy-efficiency performance, and get nearer to the maximum, using this narrow definition of efficiency is increasingly inconsistent with achieving healthy daily variations in the light environments indoors ([303](#)).

A further result of higher energy efficiency targets is an increase in the adoption of light-emitting diode (LED) lighting. When operated or dimmed with unsuitable drivers and dimmers, LEDs may flicker or produce temporal light modulation, and this could cause headaches, reduce visual performance and even results in safety risks with rotating machinery ([304](#)). Nevertheless, LED technology has advantages in spectral tuning, which may help achieving many of the health targets already discussed.

8. Impact of energy efficiency in homes on indoor environmental quality and health

8.1 Impact of energy efficiency measures on IEQ

Using low-carbon technologies for heating and cooling, energy-efficient lighting and exploiting solar energy will help existing UK homes to become low carbon and energy efficient, tackling simultaneously winter fuel poverty, improving thermal comfort in winter months, and reducing mould. However, energy efficiency measures may be also associated with several unintended negative consequences if poorly installed, especially with respect to IEQ (Section 7.3; [\(305, 306\)](#)).

MVHR systems, which were installed in homes that underwent fabric retrofit, were proven to reduce energy consumption, reduce damp and mould by reducing relative humidity, and improve thermal comfort, as shown by monitoring [\(307\)](#) and modelling studies [\(147\)](#). Formaldehyde and other VOCs were found to be high during specific retrofit works (plastering, painting), whereas post-retrofit, these levels dropped significantly [\(307\)](#).

However, shortcomings using MVHR systems were also reported, which are associated with “inadequate specification, incorrect commissioning, poor installation and performance, lack of maintenance, thermal comfort complaints, noise, occupant interference and a lack of knowledge and awareness of the systems” [\(308\)](#). In a study on the performance of the MVHR systems, only 16% of systems were commissioned correctly, and only 56% of installations met the design air flow value. The role of occupants is also of important, with research highlighting a preference for natural ventilation, high prevalence of air polluting activities and inadequate perception of IAQ [\(308\)](#). IAQ monitoring campaigns and occupant interviews identified presence of fungal growth, high levels of relative humidity (more than 60%), significant variance in heating patterns, occurrence of sick building syndrome symptoms and issues with the MVHR system [\(309\)](#). Inadequate filtration with the MVHR and openable windows, even during the heating season, led to high HCHO and PM levels, suggesting indoor sources of these and other pollutants other than the retrofitting activities [\(307\)](#). CO₂ levels were high when the trickle vents were closed or when the MVHR system was not working properly or turned off completely [\(21, 309\)](#). A post-occupancy study on new-build dwellings at 6 sites in England and Wales in 2015 found that nearly all of the 13 occupants interviewed had turned off their ventilation systems, finding them too noisy, especially at night [\(227\)](#).

Proper installation which follows best practice (such as PAS 2035) should mitigate the impacts of poor installation and unintended outcomes of energy efficiency measures. Rigour and best practice in energy efficiency retrofits needs to be promoted.

Heat pumps installed in naturally ventilated flats led to lower concentrations of indoor air pollutants and CO₂, due to increased ventilation, resulting from very frequent window opening;

heating was typically always on and cheaper to run than before the installation of the heat pumps (310). However, in homes with limited window openings and presence of indoor sources, VOCs, HCHO and PM levels were high, indicating the need for integrating continuous background ventilation that could be demand controlled (310).

It is worth mentioning that, despite the above issues, homes with MVHRs and heat pumps are very much in the minority. Data on air tightness and ventilation in real buildings is quite poor and unrepresentative, which is linked to the lack of monitoring data on IAQ; modelling studies aim to cover this gap and improve our understanding.

IAQ was modelled assuming housing energy efficiency retrofits, under different ventilation scenarios (311). Fabric and heating retrofits that were carried out together with the addition of ventilation systems reduced indoor sources of pollutants (PM_{2.5}, radon, and mould), but increased indoor exposure to outdoor-generated PM_{2.5}. In the case of inadequate ventilation and noticeable mould, energy efficiency measures did not have a wide benefit, reducing ingress of outdoor air but leading to increased indoor air pollutant levels. Finally, if there was no additional ventilation, the average indoor pollutant concentrations were further elevated compared to the previous scenario. Similar results were reported where CO levels exceeded recommended exposure levels in kitchens following retrofit without additional ventilation (34).

Climate change mitigation measures are likely to affect indoor radon levels. These will be from a combination of rising temperatures and extreme weather (especially wind), energy efficiency measures such as building insulation, and window management including the installation of metal shutters that reflect sunlight but allow fresh air exchange. However, some adaptations could counter the radonogenic effect of others. Increased building insulation means that indoor temperatures remain high during the winter with a corresponding increase in radon level, especially if outside air ingress is restricted, which has been shown by comparing the radon levels in UK homes before and after the installation of energy efficiency measures (312). Some climate change mitigations increase indoor radon levels, making previously modest doses become more significant at a population level. For example, the average UK radon level is 20Bq/m³, but after fitting triple-glazing, it can increase to 100Bq/m³. It should be noted that lung cancer risk from radon increases 16% for every 100Bq/m³ increase (72). Radon levels in underground spaces, such as basements and cellars that maintain a cool but stable temperature year-round, can show the opposite seasonality (as well as an overall increased radon level). This should be considered as people 'build down' to take advantage of the temperature-stabilising effects of the ground.

The potential impact of energy efficiency measures on biological contamination in buildings can be complex, as measures could lead to generally warmer indoor environments and higher absolute humidity (due to reduced air exchange), thus potentially creating more favourable conditions for fungi, HDM and potentially some bacteria. For example, an observational study of social housing in Cornwall (UK) found an association between higher energy efficiency ratings and current asthma in adults, with higher energy efficiency also associated with visible mould and mouldy or musty odour (313). On the other hand, relative humidity levels could be lower

due to higher temperatures, and there might be a reduction in cold surfaces (as well as reduced condensation risk) if the fabric is well insulated.

When energy-efficient retrofits occur, summertime ventilation will need to be increased in UK homes to reduce overheating risks, which will lead to greater exposure to pollution from outdoor sources and reduced exposure to pollution from indoor sources (147). Uncontrolled ventilation through trickle vents may lead to heat loss and the ingress of unfiltered outdoor air and a shift from passive, occupant controlled natural ventilation to natural ventilation in conjunction with automated active ventilation systems is recommended (147).

Following a fabric retrofit in social housing (6 cases), summer temperatures ranged between 21°C and 26°C in most cases, with one exception where summer temperatures often exceeded 27°C and reached 29°C at times (21). Internal relative humidity levels were also affected, which in general were quite low; less than 60% in the non-heating season (May to September) in most cases (21).

8.2 Impact of energy efficiency measures on health

In the UK, an increased number of lower income households are receiving fabric insulation and new heating systems to reduce energy use and fuel consumption. These interventions have the potential to reduce the risk of cold-related illnesses by making homes more affordable to heat and improve both physical (respiratory and asthma) and mental health (9, 314).

The impact of household energy efficiency on asthma in social housing was previously assessed (313). A unit increase in household SAP rating was associated with a 2% increased risk of current asthma, with the greatest risk in homes with SAP greater than 71. In a follow up study, the association between energy efficiency interventions and health was assessed over a 3-year period (315). Although loft insulation interventions were positively associated with a significant increase in admission rates for COPD and cardiovascular disease (CVD), higher levels of boiler and glazing replacement were associated with slightly lower admission rates for COPD and CVD, as a result of increased warmth.

When additional ventilation was not provided together with the dwelling energy efficiency retrofits, despite the reduced ingress of outdoor air pollutants, there was an increase in air pollutant concentrations, with a net negative impact on health (311). This study estimated that adequate ventilation could improve home energy efficiency and lead to 2,200 quality adjusted life years (QALYs) gained per 10,000 people in England over 50 years (311).

Focusing on PM, one study simulated the impact of emission reduction strategies (building fabric improvements, improved ventilation, fuel switching, and occupant behaviour changes), aiming to reduce annual average PM_{2.5} indoor concentrations by 3.0µg/m³ by 2050, compared with the 2010 baseline (316). This intervention would result in an increase of just over 13 million QALYs over the modelled 90-year follow-up period. There would also be an average increase in

quality-adjusted life expectancy at birth of 101 and 68 days for males and females, respectively (316). Benefits of the intervention for mortality would generally increase with age, with a peak at around age 80; over 300 fewer deaths in the population per year at this age by the end of the follow-up period were estimated (316).

9. Conclusions and priorities

9.1 Research priorities

There is a need for systematic surveillance of IAQ and health in homes and other buildings. Large monitoring campaigns were carried out by the Building Research Establishment in 1,000 homes more than 20 years ago to characterise the indoor environmental quality in UK homes (317). Since then, there have been small scale studies, some of them funded by the government to provide an insight on ventilation, indoor air quality and physical parameters in new homes, built under the latest building regulations, just before their revision. As a result, the indoor environment has not been recently well characterised across the UK. Carrying out systematic monitoring of the indoor air, in the same way that outdoor air is monitored, would capture the effect of changes made to the housing stock on IAQ, maximising the benefits of energy efficiency measures and minimising the unintended health consequences (318). IEQ monitoring should be sufficient to demonstrate the impact of weather conditions, their seasonal and diurnal variations on ventilation practices as well as the impact of occupant activities on ventilation and IEQ. Projects have been recently funded under the UKRI Strategic Priorities fund Clean Air Programme; however, the momentum needs to be maintained beyond the end of this programme.

Interdisciplinary behavioural science and citizen science studies are required to demonstrate the interactions between energy efficiency measures and occupants' behaviour, preferences and needs that could have an impact on their health and wellbeing. Further research is needed to evaluate the effectiveness of interventions in a holistic way, which would then lead to healthier homes and occupants.

Since current research is focussed on the impact of energy efficiency retrofitting on IEQ mainly in social housing, research is needed to evaluate the impact on private sector homes. Research could either include as a reference similar non-retrofit homes and assess the changes in IEQ and health relative to these homes or monitor the same homes before and after retrofitting. Furthermore, as more homes take-up low carbon heating (such as heat pumps), it will be useful to have more studies examining the IAQ benefits of low carbon heating (before or after).

9.2 Implications for public health

Awareness of the health and wellbeing implications of good IEQ among health care professional could be promoted. This may be achieved through bespoke guidance and training.

Healthcare professionals should be aware of the interventions that could in particular be recommended to patients with allergies and pregnant women (23). Furthermore, improvements in air filtration would protect against particles and are expected to provide health benefits.

Therefore, a multi-intervention approach that would include both medication and environmental home interventions would be effective and beneficial.

9.3 Considerations for built environment professionals

Integrated design and whole system approaches should be used when considering how to design and retrofit homes that are resilient to climate change and associated IEQ risks. The role of ventilation in modulating thermal conditions as well as air quality need to be carefully considered, whilst also addressing the potential of links with noise issues (from the residential ventilation system, or from outdoor for natural ventilation). Optimising a retrofit for winter heating, summer cooling, and IAQ is not trivial and challenging and is currently outside the scope of much guidance (Part O, PAS 2035, or industry standards), which usually focus on one criterion at a time. As such, steps could be taken to improve this.

To reduce the risks from climate change and IEQ in existing buildings, built environment professionals are encouraged to collaborate with other disciplines (such as public health) and stakeholders (for instance, local authorities) to develop actionable indicators of quality and workable warning systems. Data on health outcomes associations should be collected, to reduce risk of unintended consequences and justify cost effectiveness of intervention. Training should be provided by relevant professional bodies.

Acronyms and abbreviations

Abbreviation	Meaning
CCRA	Climate Change Risk Assessment
CO	carbon monoxide
CO ₂	carbon dioxide
CVD	cardiovascular disease
GHG	greenhouse gases
HCHO	formaldehyde
HDM	house dust mites
HECC	Health Effects of Climate Change in the UK report
IAQ	indoor air quality
IEQ	indoor environmental quality
I/O	indoor/outdoor ratios
LED	light-emitting diode
MVHR	mechanical ventilation with heat recovery
NH ₃	ammonia
NO ₂	nitrogen dioxide
NO ₃	nitrate radicals
O ₃	ozone
OH	hydroxyl radicals
PHE	Public Health England
PM	particulate matter
PRM	passive removal materials
QALYs	quality adjusted life years
SAP	Standard Assessment Procedure
SOAs	secondary organic aerosols
sVOCs	semi-volatile organic compounds
UHI	urban heat island
VOCs	volatile organic compounds

References

1. Department of Health (2002). '[Health Effects of Climate Change in the UK](#)'
2. Health Protection Agency (HPA) (2008). '[Health Effect of Climate Change in the UK 2008](#)' Kovats S, editor
3. HPA (2012). '[Health Effects of Climate Change in the UK 2012](#)' Vardoulakis S, Heaviside C, editors
4. Vardoulakis S, Dimitroulopoulou C, Thornes J, Lai KM, Taylor J, Myers I, and others (2015). '[Impact of climate change on the domestic indoor environment and associated health risks in the UK](#)' Environment International: volume 85, pages 299 to 313
5. Kovats S, Brisley R (2021). '[Health, communities and the built environment](#)' In: Betts RA, Haward AB, Pearson K V, editors. The Third Climate Change Risk Assessment Technical Report
6. Dimitroulopoulou C, Ashmore MR, Terry AC (2017). '[Use of population exposure frequency distributions to simulate effects of policy interventions on NO₂ exposure](#)' Atmospheric Environment: volume 150, pages 1 to 14
7. Fisk WJ (2015). '[Review of some effects of climate change on indoor environmental quality and health and associated no-regrets mitigation measures](#)'. Building and Environment: volume 86, pages 70 to 80
8. Ortiz M, Itard L, Bluysen PM (2020). '[Indoor environmental quality related risk factors with energy-efficient retrofitting of housing: a literature review](#)' Energy and Buildings: volume 221, page 110102
9. Wang C, Wang J, Norbäck D (2022). '[A systematic review of associations between energy use, fuel poverty, energy efficiency improvements and health](#)' International Journal of Environmental Research and Public Health: volume 19, page 7393
10. Department for Business, Energy and Industrial Strategy (BEIS) (2022). '[2020 UK greenhouse gas emissions, final figures](#)'
11. Climate Change Committee (CCC) (2019). '[UK housing: fit for the future?](#)'
12. HM Government (2017). '[The Clean Growth Strategy, leading the way to a low carbon future](#)'
13. Department for Levelling Up, Housing and Communities (DLUHC) and Ministry of Housing, Communities and Local Government (MHCLG) (2021). '[Approved Document F: Ventilation](#)'
14. DLUHC and MHCLG (2021). '[Approved Document L: Conservation of fuel and power](#)'
15. DLUHC (2021). '[Approved Document O: Overheating](#)'
16. DLUHC (2021). '[Approved Document S: infrastructure for the charging of electric vehicles](#)'
17. Scottish Government (2023). '[Building standards](#)'
18. Office for National Statistics (ONS) (2021). '[Families and households in the UK: 2020](#)' Census 2021; 2021
19. Shrubsole C, Hamilton IG, Zimmermann N, Papachristos G, Broyd T, Burman E, and others (2019). '[Bridging the gap: the need for a systems thinking approach in understanding and addressing energy and environmental performance in buildings](#)' Indoor

- and Built Environment: volume 28, pages 100 to 117
20. Gupta R, Gregg M (2020). '[Domestic energy mapping to enable area-based whole house retrofits](#)'. Energy and Buildings: volume 229, page 110514
 21. Gupta R, Kapsali M, Howard A (2018). '[Evaluating the influence of building fabric, services and occupant related factors on the actual performance of low energy social housing dwellings in UK](#)'. Energy and Buildings: volume 174, pages 548 to 562
 22. CCC (2019). '[Net Zero – the UK’s contribution to stopping global warming](#)'
 23. National Institute for Health and Care Excellence (NICE) (2020). '[Indoor air quality at home](#)'
 24. Royal College of Pediatrics and Child Health (RCPCH) (2020). '[The inside story: health effects of indoor air quality on children and young people](#)'
 25. Air Quality Expert Group (AQEG) (2022). '[Indoor Air Quality](#)'
 26. Dimitroulopoulou S, Exley KS, Gowers AM, Waite T (2022). '[Disparities in air pollution exposure and its health impacts](#)'. Chief Medical Officer’s Annual Report 2022: Air Pollution
 27. Exley KS, Dimitroulopoulou S, Gowers AM, Waite T, Hansell A (2022). '[Air pollution and how it harms health](#)'. Chief Medical Officer’s Annual Report 2022: Air Pollution
 28. Noakes C, Sharpe T, Freeman H, Cook M, Hathway A, Burridge H, and others (2022). '[Interventions in indoor environments](#)'. Chief Medical Officer’s Annual Report 2022: Air Pollution
 29. Institute of Air Quality Management (IAQM) (2021). '[Indoor Air Quality Guidance: Assessment, Monitoring, Modelling and Mitigation \(version 1.0\)](#)'
 30. Brembilla E, Aletta F, Dimitroulopoulou S, Gubb C, Hare J, Kang J, and others (2022). '[TM68: Monitoring Indoor Environmental Quality \(Technical Manual\)](#)'. Chartered Institution of Building Services Engineers (CIBSE)
 31. Dimitroulopoulou S (2021). '[Indoor air quality and health](#)'. Environmental Scientist: pages 42 to 49
 32. National Academies of Sciences, Engineering and Medicine (NASEM) (2022). '[Why indoor chemistry matters](#)'
 33. Department for Environment, Food and Rural Affairs (Defra) (2019). '[Clean Air Strategy 2019](#)'
 34. Taylor J, Shrubsole C, Symonds P, Mackenzie I, Davies M (2019). '[Application of an indoor air pollution metamodel to a spatially-distributed housing stock](#)'. Science of the Total Environment: volume 667, pages 390 to 399
 35. Dimitroulopoulou C, Ashmore MR, Hill MTR, Byrne MA, Kinnersley R (2006). '[INDAIR: A probabilistic model of indoor air pollution in UK homes](#)'. Atmospheric Environment: volume 40, page 6362 to 6379
 36. United Nations Scientific Committee on the Effects of Atomic Radiation (UNSCEAR) (2006). '[UNSCEAR 2006 Report to the General Assembly, Volumes I and II, with scientific annexes](#)'
 37. Bartemes KR, Kita H (2018). '[Innate and adaptive immune responses to fungi in the airway](#)'. Journal of Allergy and Clinical Immunology: volume 142, pages 353 to 363
 38. D’Amato G, Chong-Neto HJ, Monge Ortega OP, Vitale C, Ansoategui I, Rosario N, and others (2020). '[The effects of climate change on respiratory allergy and asthma induced](#)'

- [by pollen and mold allergens](#)' Allergy: volume 75, pages 2219 to 2228
39. Kukadia V. (2021). '[Outdoor air pollution: its ingress and impact on indoor environments](#)' Environmental Scientist: pages 63 to 69
 40. McGrath JA, Sheahan JN, Dimitroulopoulou C, Ashmore MR, Terry AC, Byrne MA (2017). '[PM exposure variations due to different time activity profile simulations within a single dwelling](#)' Building and Environment: volume 116, pages 55 to 63
 41. Myers I (2022). '[The efficient operation of regulation and legislation: an holistic approach to understanding the effect of carbon monoxide on mortality. A report for the CO Research Trust](#)'
 42. NASEM (2022). '[Indoor exposure to fine particulate matter and practical mitigation approaches: proceedings of a workshop](#)'
 43. AECOM (2019). '[Ventilation and indoor air quality in new homes](#)'
 44. Shrubsole C, Symonds P, Taylor J (2017). '[Determinants of CO exposure in the English housing stock: modelling current and possible future risks. UCL report for gas safety trust](#)'
 45. Coward SKD, Raw GJ (1996). '[Nitrogen dioxide](#)'. Indoor Air Quality in Homes: The Building Research Establishment Indoor Environment Study. London: Construction Research Communication Ltd
 46. Naldzhiev D, Mumovic D, Strlic M (2020). '[Polyurethane insulation and household products—a systematic review of their impact on indoor environmental quality](#)' Building and Environment: volume 169, page 106559
 47. Halios CH, Landeg-Cox C, Lowther SD, Middleton A, Marczylo T, Dimitroulopoulou S (2022). '[Chemicals in European residences – Part I: a review of emissions, concentrations and health effects of volatile organic compounds \(VOCs\)](#)'. Science of The Total Environment: volume 839, page 156201
 48. Public Health England (PHE) (2019). '[Air quality: UK guidelines for volatile organic compounds in indoor spaces](#)'
 49. Biler A, Tavil AU, Su Y, Khan N (2018). '[A review of performance specifications and studies of trickle vents](#)'. Buildings: volume 8, page 152
 50. O'Leary C, Jones B, Dimitroulopoulou S, Hall IP (2019). '[Setting the standard: the acceptability of kitchen ventilation for the English housing stock](#)' Building and Environment: volume 166, page 106417
 51. Howieson SG, Sharpe T, Farren P (2014). '[Building tight - ventilating right? How are new air tightness standards affecting indoor air quality in dwellings?](#)' Building Services Engineering Research and Technology: volume 35, pages 475 to 487
 52. Morey PR (2010). '[Climate change and potential effects on microbial air quality in the built environment](#)'
 53. Acevedo N, Zakzuk J, Caraballo L (2019). '[House dust mite allergy under changing environments](#)' Allergy, Asthma and Immunology Research: volume 11, page 450 to 469
 54. Szczurek A, Dolega A, Maciejewska M (2018). '[Profile of occupant activity impact on indoor air - method of its determination](#)' Energy and Buildings: volume 158, page 1564 to 1575
 55. Chen CM, Thiering E, Doekes G, Zock JP, Bakolis I, Norbäck D, and others (2012). '[Geographical variation and the determinants of domestic endotoxin levels in mattress](#)

- [dust in Europe](#)' Indoor Air: volume 22, pages 24 to 32
56. Salonen H, Duchaine C, Létourneau V, Mazaheri M, Laitinen S, Clifford S, and others (2016). '[Endotoxin levels and contribution factors of endotoxins in resident, school and office environments: a review](#)' Atmospheric Environment: volume 142, pages 360 to 369
 57. NASEM (2017). '[Microbiomes of the built environment: a research agenda for indoor microbiology, human health and buildings](#)'
 58. Abramson MJ, Guo Y (2019). '[Indoor endotoxin exposure and ambient air pollutants interact on asthma outcomes](#)' American Journal of Respiratory and Critical Care Medicine: volume 200, pages 652 to 654
 59. Shamsollahi HR, Ghoochani M, Jaafari J, Moosavi A, Sillanpää M, Alimohammadi M (2019). '[Environmental exposure to endotoxin and its health outcomes: a systematic review](#)' Ecotoxicology and Environmental Safety: volume 174, pages 236 to 244
 60. Ferguson L, Taylor J, Zhou K, Shrubsole C, Symonds P, Davies M, and others (2021). '[Systemic inequalities in indoor air pollution exposure in London, UK](#)' Buildings and Cities: volume 2, pages 425 to 448
 61. Carslaw N (2019). '[Chemical reactions in the indoor atmosphere](#)' In: Harrison RM, Hester RE, editors. Indoor Air Pollution: pages 105 to 126
 63. COCGG (2022). '[The Cross-Government Group on Gas Safety and Carbon Monoxide Awareness: annual report autumn 2020 to autumn 2021](#)'
 64. Gentile D, Adams R, Klatka M, Bradberry S, Gray L, Thanacoody R, and others (2021). '[Carbon monoxide exposures reported to the UK National Poisons Information Service: a 4-year study](#)' Journal of Public Health: volume 44, pages 565 to 574
 65. Close RM, Iqbal N, Jones SJ, Kibble A, Flanagan RJ, Crabbe H, and others (2022). '[Fatal unintentional non-fire related carbon monoxide poisoning: data from narrative verdicts in England and Wales 1998 to 2019](#)' International Journal of Environmental Research and Public Health: volume 19, page 4099
 66. Guercio V, Pojum IC, Leonardi GS, Shrubsole C, Gowers AM, Dimitroulopoulou S, and others (2021). '[Exposure to indoor and outdoor air pollution from solid fuel combustion and respiratory outcomes in children in developed countries: a systematic review and meta-analysis](#)' Science of the Total Environment: volume 755, page 142187
 67. Guercio V, Doutsis A, Exley KS (2022). '[A systematic review on solid fuel combustion exposure and respiratory health in adults in Europe, USA, Canada, Australia and New Zealand](#)' International Journal of Hygiene and Environmental Health: volume 241, page 113926
 68. Defra (2023). '[Environmental Improvement Plan: first revision of the 25 Year Environment Plan](#)'
 69. Lowther SD, Dimitroulopoulou S, Foxall K, Shrubsole C, Cheek E, Gadeberg B, and others (2021). '[Low level carbon dioxide indoors: a pollution indicator or a pollutant? A health-based perspective](#)' Environments: volume 8, page 125
 70. Oatway WB, Jones AL, Holmes S (2016). '[Ionising radiation exposure of the UK population, 2010 review](#)'
 71. McColl NP, Miles JCH, Green BMR, Dixon DW, Fey R, Meara JR, and others (2010). '[Limitation of human exposure to radon](#)'

72. International Agency for Research in Cancer (IARC), WHO (2012). '[Radiation volume 100D, a review of human carcinogens](#)' Monographs on the Evaluation of Carcinogenic Hazards to Humans
73. HPA (2009). '[Radon and Public Health. Report of the Independent Advisory Group on Ionising Radiation](#)'
74. McGrath JA, Aghamolaei R, O'Donnell J, Byrne MA (2021). '[Factors influencing radon concentration during energy retrofitting in domestic buildings: a computational evaluation](#)'. Building and Environment: volume 194, page 107712
75. Kumar P, Kausar MA, Singh AB, Singh R (2021). '[Biological contaminants in the indoor air environment and their impacts on human health](#)' Air Quality, Atmosphere and Health: volume 14, pages 1723 to 1736
76. Custovic A, Murray CS, Simpson A (2019). '[Dust-mite inducing asthma: what advice can be given to patients?](#)' Expert Review of Respiratory Medicine: volume 13, pages 929 to 936
77. Borchers AT, Chang C, Gershwin EM (2017). '[Mould and human health: a reality check](#)' Clinical Reviews in Allergy and Immunology: volume 52, pages 305 to 322
78. Platt SD, Martin CJ, Hunt SM, Lewis CW (1989). '[Damp housing, mould growth, and symptomatic health state](#)' British Medical Journal: volume 298, pages 1673 to 1678
79. Baxi SN, Portnoy JM, Larenas-Linnemann D, Phipatanakul W (2016). '[Exposure and health effects of fungi on humans](#)' Journal of Allergy and Clinical Immunology in Practice: volume 4, pages 396 to 404
80. Mendell MJ, Macher JM, Kumagai K (2018). '[Measured moisture in buildings and adverse health effects: a review](#)' Indoor Air: volume 28, pages 488 to 499
81. Arundel A V, Sterling EM, Biggin JH, Sterling TD (1986). '[Indirect health effects of relative humidity in indoor environments](#)' Environmental Health Perspectives: volume 65, pages 351 to 361
82. Wolkoff P, Azuma K, Carrer P (2021). '[Health, work performance, and risk of infection in office-like environments: the role of indoor temperature, air humidity, and ventilation](#)' International Journal of Hygiene and Environmental Health: volume 233, page 113709
83. Mallach G, St-Jean M, MacNeill M, Aubin D, Wallace L, Shin T, and others (2017). '[Exhaust ventilation in attached garages improves residential indoor air quality](#)' Indoor Air: volume 27, pages 487 to 499
84. Hernandez G, Wallis SL, Graves I, Narain S, Birchmore R, Berry TA (2020). '[The effect of ventilation on volatile organic compounds produced by new furnishings in residential buildings](#)' Atmospheric Environment-X: volume 6, page 100069
85. Wargocki P (2013). '[The effects of ventilation in homes on health](#)' International Journal of Ventilation: volume 12, pages 101 to 118
86. Carrer P, de Oliveira Fernandes E, Santos H, Hänninen O, Kephelopoulos S, Wargocki P (2018). '[On the development of health-based ventilation guidelines: principles and framework](#)' International Journal of Environmental Research and Public Health: volume 15, page 1360
87. Lajoie P, Aubin D, Gingras V, Daigneault P, Ducharme F, Gauvin D, and others (2015). '[The IVAIRE project: a randomized controlled study of the impact of ventilation on indoor](#)

- [air quality and the respiratory symptoms of asthmatic children in single family homes'](#)
Indoor Air: volume 25, pages 582 to 597
88. van Holsteijn IRCA, Li IWL, Valk IHJJ, Kornaat IW (2016). '[Improving the energy and IAQ performance of ventilation systems in Dutch dwellings](#)' International Journal of Ventilation: volume 14, pages 363 to 370
 89. Scientific Advisory Group for Emergencies (SAGE) Environmental and Modelling Group (EMG) (2020). '[Role of ventilation in controlling SARS-CoV-2 transmission](#)'
 90. Aldred JR, Darling E, Morrison G, Siegel J, Corsi RL (2016). '[Benefit-cost analysis of commercially available activated carbon filters for indoor ozone removal in single-family homes](#)' Indoor Air: volume 26, pages 501 to 512
 91. Sheng Y, Fang L, Zhang L, Wang Y (2020). '[Aimed at building a healthy living environment: an analysis of performance of clean-air heat pump system for ammonia removal](#)' Building and Environment: volume 171, page 106639
 92. Bergmann KC, Sehlinger T, Gildemeister J, Zuberbier T (2017). '[A novel experimental technology for testing efficacy of air purifiers on pollen reduction](#)' Allergo Journal International: volume 26, pages 1 to 6
 93. Raso RA, Zeltner M, Stark WJ (2014). '[Indoor air purification using activated carbon adsorbers: regeneration using catalytic combustion of intermediately stored VOC](#)' Industrial and Engineering Chemistry Research: volume 53, pages 19304 to 19312
 94. Xiao R, Mo J, Zhang Y, Gao D (2018). '[An in-situ thermally regenerated air purifier for indoor formaldehyde removal](#)' Indoor Air: volume 28, pages 266 to 275
 95. Kearney J, Wallace L, MacNeill M, Heroux ME, Kindzierski W, Wheeler A (2014). '[Residential infiltration of fine and ultrafine particles in Edmonton](#)' Atmospheric Environment: volume 94, pages 793 to 805
 96. Lee WC, Catalano PJ, Yoo JY, Park CJ, Koutrakis P (2015). '[Validation and application of the mass balance model to determine the effectiveness of portable air purifiers in removing ultrafine and submicrometer particles in an apartment](#)' Environmental Science and Technology: volume 49, pages 9592 to 9599
 97. Brugge D, Simon MC, Hudda N, Zellmer M, Corlin L, Cleland S, and others (2017). '[Lessons from in-home air filtration intervention trials to reduce urban ultrafine particle number concentrations](#)' Building and Environment: volume 126, pages 266 to 275
 98. Cox J, Isiugo K, Ryan P, Grinshpun SA, Yermakov M, Desmond C, and others (2018). '[Effectiveness of a portable air cleaner in removing aerosol particles in homes close to highways](#)' Indoor Air: volume 28, pages 818 to 827
 99. Fazli T, Zeng Y, Stephens B (2019). '[Fine and ultrafine particle removal efficiency of new residential HVAC filters](#)' Indoor Air: volume 29, pages 656 to 669
 100. Fermo P, Comite V, Falciola L, Guglielmi V, Miani A (2020). '[Efficiency of an air cleaner device in reducing aerosol particulate matter \(PM\) in indoor environments](#)' International Journal of Environmental Research and Public Health: volume 17, page 18
 101. Li T, Siegel JA (2020). '[In situ efficiency of filters in residential central HVAC systems](#)' Indoor Air: volume 30, pages 315 to 325
 102. Spilak MP, Karottki GD, Kolarik B, Frederiksen M, Loft S, Gunnarsen L (2014). '[Evaluation of building characteristics in 27 dwellings in Denmark and the effect of using particle](#)

- [filtration units on PM_{2.5} concentrations](#)' Building and Environment: volume 73, pages 55 to 63
103. Zhong L, Haghghat F (2014). '[Ozonation air purification technology in HVAC applications](#)' Ashrae Transactions: volume 120, pages 1 to 8
104. Tang M, Chen SC, Chang DQ, Xie X, Sun J, Pui DYH (2018). '[Filtration efficiency and loading characteristics of PM_{2.5} through composite filter media consisting of commercial HVAC electret media and nanofiber layer](#)' Separation and Purification Technology: volume 198, pages 137 to 145
105. van Walsem J, Roegiers J, Modde B, Lenaerts S, Denys S (2018). '[Integration of a photocatalytic multi-tube reactor for indoor air purification in HVAC systems: a feasibility study](#)' Environmental Science and Pollution Research: volume 25, pages 18015 to 18026
106. Pichat P (2019). '[A brief survey of the practicality of using photocatalysis to purify the ambient air \(indoors or outdoors\) or air effluents](#)' Applied Catalysis B: Environmental: volume 245, pages 770 to 776
107. Gonzalez-Martin J, Kraakman NJR, Perez C, Lebrero R, Munoz R (2021). '[A state-of-the-art review on indoor air pollution and strategies for indoor air pollution control](#)' Chemosphere: volume 262, page 128376
108. Alavy M, Siegel JA (2019). '[IAQ and energy implications of high efficiency filters in residential buildings: a review \(RP-1649\)](#)' Science and Technology for the Built Environment: volume 25, pages 261 to 271
109. van Boven FE, de Jong NW, Braunstahl GJ, Arends LR, Gerth Van Wijk R (2020). '[Effectiveness of the air purification strategies for the treatment of allergic asthma: a meta-analysis](#)' International Archives of Allergy and Immunology: volume 181, pages 395 to 402
110. Cheek E, Guercio V, Shrubsole C, Dimitroulopoulou S (2021). '[Portable air purification: review of impacts on indoor air quality and health](#)' Science of the Total Environment: volume 766, page 142585
111. Morishita M, Adar SD, D'Souza J, Ziemba RA, Bard RL, Spino C, and others (2018). '[Effect of portable air filtration systems on personal exposure to fine particulate matter and blood pressure among residents in a low-income senior facility: a randomized clinical trial](#)' JAMA Internal Medicine: volume 178, pages 1350 to 1357
112. James C, Bernstein DI, Cox J, Ryan P, Wolfe C, Jandarov R, and others (2020). '[HEPA filtration improves asthma control in children exposed to traffic-related airborne particles](#)' Indoor Air: volume 30, pages 235 to 243
113. Rice JL, McGrath-Morrow SA, Collaco JM (2020). '[Indoor air pollution sources and respiratory symptoms in bronchopulmonary dysplasia](#)' Journal of Pediatrics: volume 222, page 85
114. Fisk WJ, Chan WR (2017). '[Effectiveness and cost of reducing particle-related mortality with particle filtration](#)' Indoor Air: volume 27, pages 909 to 920
115. Martenies SE, Batterman SA (2018). '[Effectiveness of using enhanced filters in schools and homes to reduce indoor exposures to PM_{2.5} from outdoor sources and subsequent health benefits for children with asthma](#)' Environmental Science and Technology: volume 52, pages 10767 to 10776
116. Montgomery JF, Reynolds CCO, Rogak SN, Green SI (2015). '[Financial implications of](#)

- [modifications to building filtration systems](#)' Building and Environment: volume 85, pages 17 to 28
117. Zhao D, Azimi P, Stephens B (2015). '[Evaluating the long-term health and economic impacts of central residential air filtration for reducing premature mortality associated with indoor fine particulate matter \(PM_{2.5}\) of outdoor origin](#)' International Journal of Environmental Research and Public Health: volume 12, pages 8448 to 8479
118. Siegel JA (2016). '[Primary and secondary consequences of indoor air cleaners](#)' Indoor Air: volume 26, pages 88 to 96
119. Stapleton E, Ruiz-Rudolph P (2018). '[The potential for indoor ultrafine particle reduction using vegetation under laboratory conditions](#)' Indoor and Built Environment: volume 27, pages 70 to 83
120. Moya TA, van den Dobbelsteen A, Ottele M, Bluysen PM (2019). '[A review of green systems within the indoor environment](#)' Indoor and Built Environment: volume 28, pages 298 to 309
121. Pettit T, Irga PJ, Abdo P, Torpy FR (2017). '[Do the plants in functional green walls contribute to their ability to filter particulate matter?](#)' Building and Environment: volume 125, pages 299 to 307
122. Cummings BE, Waring MS (2020). '[Potted plants do not improve indoor air quality: a review and analysis of reported VOC removal efficiencies](#)' Journal of Exposure Science and Environmental Epidemiology: volume 30, pages 253 to 261
123. Cetin M, Sevik H (2016). '[Measuring the impact of selected plants on indoor CO₂ concentrations](#)' Polish Journal of Environmental Studies: volume 25, pages 973 to 979
124. Torpy FR, Zavattaro M, Irga PJ (2017). '[Green wall technology for the phytoremediation of indoor air: a system for the reduction of high CO₂ concentrations](#)' Air Quality Atmosphere and Health: volume 10, pages 575 to 585
125. Markowicz P, Larsson L (2012). '[The surface emissions trap: a new approach in indoor air purification](#)' Journal of Microbiological Methods: volume 91, pages 290 to 294
126. Markowicz P, Larsson L (2015). '[Improving the indoor air quality by using a surface emissions trap](#)' Atmospheric Environment: volume 106, pages 376 to 381
127. Pitkäranta MJ, Lehtimaa T (2020). '[A case study: the effect of flooring renovation with adsorptive cloth on the residual emissions of 2-ethyl-1-hexanol and C9-C10 alcohols](#)' E3S Web of Conferences: volume 172, page 23009
128. Darling E, Morrison GC, Corsi RL (2016). '[Passive removal materials for indoor ozone control](#)' Building and Environment: volume 106, pages 33 to 44
129. Air Infiltration and Ventilation Centre (AIVC) (2021). '[Smart materials for energy efficient IAQ management](#)'
130. Park S, Seo J (2018). '[Bake-out strategy considering energy consumption for improvement of indoor air quality in floor heating environments](#)' International Journal of Environmental Research and Public Health: volume 15, page 2720
131. Levasseur ME, Poulin P, Campagna C, Leclerc JM (2017). '[Integrated management of residential indoor air quality: a call for stakeholders in a changing climate](#)' International Journal of Environmental Research and Public Health: volume 14, page 1455
132. Kenner A, Skula A, Mankikar D, Zimmermann I, Nobles E, Menzo J, and others (2020).

- ['The climate-ready home: teaching climate change in the context of asthma management'](#)
Environmental Justice: volume 13, pages 101 to 108
133. Indoor Air Quality Working Party (2021). ['Tips for cleaner air at home'](#)
134. Tsoulou I, Taylor J, Symonds P, Mohajeri N, Davies M (2021). ['Improving indoor thermal comfort, air quality and the health of older adults through environmental policies in London'](#) Journal of Physics: Conference Series: volume 2069, page 12240
135. Taylor J, Davies M, Mavrogianni A, Chalabi Z, Biddulph P, Oikonomou E, and others (2014). ['The relative importance of input weather data for indoor overheating risk assessment in dwellings'](#) Building and Environment: volume 76, pages 81 to 91
136. Auzeby M, Wei S, Underwood C, Tindall J, Chen C, Ling H, and others (2016). ['Effectiveness of using phase change materials on reducing summer overheating issues in UK residential buildings with identification of influential factors'](#) Energies: volume 9, page 605
137. Morgan C, Foster JA, Poston A, Sharpe TR (2017). ['Overheating in Scotland: contributing factors in occupied homes'](#) Building Research and Information: volume 45, pages 143 to 156
138. Santamouris M (2020). ['Recent progress on urban overheating and heat island research. Integrated assessment of the energy, environmental, vulnerability and health impact. Synergies with the global climate change'](#) Energy and Buildings: volume 207, page 109482
139. Johnson H, Kovats S, McGregor G, Stedman J, Gibbs M, Walton H, and others (2004). ['The impact of the 2003 heat wave on mortality and hospital admissions in England'](#) Epidemiology: volume 15, pages S126 to S126
140. PHE (2019). ['PHE heatwave mortality monitoring: summer 2018'](#)
141. Macintyre HL, Heaviside C, Taylor J, Picetti R, Symonds P, Cai XM, and others (2018). ['Assessing urban population vulnerability and environmental risks across an urban area during heatwaves: implications for health protection'](#) Science of The Total Environment: volumes 610 to 611, pages 678 to 690
142. Lomas KJ, Watson S, Allinson D, Fateh A, Beaumont A, Allen J, and others (2021). ['Dwelling and household characteristics' influence on reported and measured summertime overheating: a glimpse of a mild climate in the 2050s'](#) Building and Environment: volume 201, page 107986
143. Nebia B, Aoul KT (2017). ['Overheating and daylighting: assessment tool in early design of London's high-rise residential buildings'](#) Sustainability: volume 9, page 1544
144. Habitzreuter L, Smith ST, Keeling T (2020). ['Modelling the overheating risk in an uniform high-rise building design with a consideration of urban context and heatwaves'](#) Indoor and Built Environment: volume 29, pages 671 to 688
145. Vandentorren S, Bretin P, Zeghnoun A, Mandereau-Bruno L, Croisier A, Cochet C, and others (2006). ['August 2003 heat wave in France: risk factors for death of elderly people living at home'](#) European Journal of Public Health: volume 16, pages 583 to 591
146. Taylor J, Wilkinson P, Davies M, Armstrong B, Chalabi Z, Mavrogianni A, and others (2015). ['Mapping the effects of urban heat island, housing, and age on excess heat-related mortality in London'](#) Urban Climate: volume 14, pages 517 to 528

147. Petrou G, Symonds P, Mavrogianni A, Mylona A, Davies M (2019). ['The summer indoor temperatures of the English housing stock: exploring the influence of dwelling and household characteristics'](#) Building Services Engineering Research and Technology: volume 40, pages 492 to 511
148. Gupta R, Gregg M (2020). ['Assessing the magnitude and likely causes of summertime overheating in modern flats in UK'](#) Energies: volume 13, page 5202
149. Drury P, Watson S, Lomas KJ (2021). ['Summertime overheating in UK homes: is there a safe haven?'](#) Buildings and Cities: volume 2, pages 970 to 990
150. Beizaee A, Lomas KJ, Firth SK (2013). ['National survey of summertime temperatures and overheating risk in English homes'](#) Building and Environment: volume 65, pages 1 to 17
151. Hughes C, Natarajan S (2019). ['Summer thermal comfort and overheating in the elderly'](#) Building Services Engineering Research and Technology: volume 40, pages 426 to 445
152. Lomas KJ, Kane T (2013). ['Summertime temperatures and thermal comfort in UK homes'](#) Building Research and Information: volume 41, pages 259 to 280
153. Taylor J, Symonds P, Wilkinson P, Heaviside C, Macintyre H, Davies M, and others (2018). ['Estimating the influence of housing energy efficiency and overheating adaptations on heat-related mortality in the West Midlands, UK'](#) Atmosphere: volume 9, page 190
154. Kinnane O, Grey T, Dyer M (2016). ['Adaptable housing design for climate change adaptation'](#) In: Proceedings of the Institution of Civil Engineers-Engineering Sustainability: pages 249 to 267
155. McLeod RS, Swainson M (2017). ['Chronic overheating in low carbon urban developments in a temperate climate'](#) Renewable and Sustainable Energy Reviews: volume 74, pages 201 to 220
156. Hernández-Pérez I, Álvarez G, Xamán J, Zavala-Guillén I, Arce J, Simá E (2014). ['Thermal performance of reflective materials applied to exterior building components: a review'](#) Energy and Buildings: volume 80, pages 81 to 105
157. Barozzi B, Pollastro MC (2016). ['Assessment of the impact of cool roofs in temperate climates through a comparative experimental campaign in outdoor test cells'](#) Buildings: volume 6, page 52
158. Baniassadi A, Sailor DJ, Crank PJ, Ban-Weiss GA (2018). ['Direct and indirect effects of high-albedo roofs on energy consumption and thermal comfort of residential buildings'](#) Energy and Buildings: volume 178, pages 71 to 83
159. Pisello AL, Saliari M, Vasilakopoulou K, Hadad S, Santamouris M (2018). ['Facing the urban overheating: recent developments. Mitigation potential and sensitivity of the main technologies'](#) WIREs: Energy and Environment: volume 7, page e294
160. Baniassadi A, Sailor DJ, Ban-Weiss GA (2019). ['Potential energy and climate benefits of super-cool materials as a rooftop strategy'](#) Urban Climate: volume 29, page 100495
161. Barbosa R, Vicente R, Santos R (2016). ['Comfort and buildings: climate change vulnerability and strategies'](#) International Journal of Climate Change Strategies and Management: volume 8, pages 670 to 688
162. Kuczynski T, Staszczuk A, Gortych M, Stryjski R (2021). ['Effect of thermal mass, night ventilation and window shading on summer thermal comfort of buildings in a temperate climate'](#) Building and Environment: volume 204, page 108126

163. McLeod RS, Hopfe CJ, Kwan A (2013). '[An investigation into future performance and overheating risks in Passivhaus dwellings](#)' Building and Environment: volume 70, pages 189 to 209
164. Psomas T, Heiselberg P, Duer K, Bjørn E (2016). '[Overheating risk barriers to energy renovations of single family houses: multicriteria analysis and assessment](#)' Energy and Buildings: volume 117, pages 138 to 148
165. Mitchell R, Natarajan S (2019). '[Overheating risk in Passivhaus dwellings](#)' Building Services Engineering Research and Technology: volume 40, pages 446 to 469
166. Taylor J, Wilkinson P, Picetti R, Symonds P, Heaviside C, Macintyre HL, and others (2018). '[Comparison of built environment adaptations to heat exposure and mortality during hot weather, West Midlands region, UK](#)' Environment International: volume 111, pages 287 to 294
167. Mavrogianni A, Taylor J, Davies M, Thoua C, Kolm-Murray J (2015). '[Urban social housing resilience to excess summer heat](#)' Building Research and Information: volume 43, pages 316 to 333
168. Mavrogianni A, Pathan A, Oikonomou E, Biddulph P, Symonds P, Davies M (2016). '[Inhabitant actions and summer overheating risk in London dwellings](#)' Building Research and Information: volume 45, pages 119 to 142
169. Fosas D, Coley DA, Natarajan S, Herrera M, de Pando MF, Ramallo-Gonzalez A (2018). '[Mitigation versus adaptation: does insulating dwellings increase overheating risk?](#)' Building and Environment: volume 143, pages 740 to 759
170. Tink V, Porritt S, Allinson D, Loveday D (2018). '[Measuring and mitigating overheating risk in solid wall dwellings retrofitted with internal wall insulation](#)' Building and Environment: volume 141, pages 247 to 261
171. Makantasi AM, Mavrogianni A (2016). '[Adaptation of London's social housing to climate change through retrofit: a holistic evaluation approach](#)' Advances in Building Energy Research: volume 10, pages 99 to 124
172. Kumar D, Alam M, Zou PXW, Sanjayan JG, Memon RA (2020). '[Comparative analysis of building insulation material properties and performance](#)' Renewable and Sustainable Energy Reviews: volume 131, page 110038
173. Mourkos K, Hopfe CJ, McLeod RS, Goodier C, Swainson M (2020). '[The impact of accurately modelling corridor thermodynamics in the overheating risk assessment of multi-residential dwellings](#)' Energy and Buildings: volume 224, page 110302
174. Vellei M, Ramallo-Gonzalez AP, Coley D, Lee J, Gabe-Thomas E, Lovett T, and others (2017). '[Overheating in vulnerable and non-vulnerable households](#)' Building Research and Information: volume 45, pages 102 to 118
175. Hajat S, Vardoulakis S, Heaviside C, Eggen B (2014). '[Climate change effects on human health: projections of temperature-related mortality for the UK during the 2020s, 2050s and 2080s](#)' Journal of Epidemiology and Community Health: volume 68, pages 641 to 648
176. Ezratty V, Ormandy D (2015). '[Thermal discomfort and health: protect the susceptible \(part 2\)](#)' Environnement, Risques et Santé: volume 14, pages 221 to 229
177. Arbuthnott KG, Hajat S (2017). '[The health effects of hotter summers and heat waves in the population of the UK: a review of the evidence](#)' Environmental Health: volume 16,

page 119

178. CCC (2022). ['Risks to health, wellbeing and productivity from overheating in buildings'](#)
179. Thompson R, Hornigold R, Page L, Waite T (2018). ['Associations between high ambient temperatures and heat waves with mental health outcomes: a systematic review'](#) Public Health: volume 161, pages 171 to 191
180. WHO (2018). ['Heat and health'](#)
181. Hajat S, Kovats RS, Lachowycz K (2007). ['Heat-related and cold-related deaths in England and Wales: who is at risk?'](#) Occupational and Environmental Medicine: volume 64, pages 93 to 100
182. Anderson M, Carmichael C, Murray V, Dengel A, Swainson M (2013). ['Defining indoor heat thresholds for health in the UK'](#) Perspectives in Public Health: volume 133, pages 158 to 164
183. Tham S, Thompson R, Landeg O, Murray KA, Waite T (2020). ['Indoor temperature and health: a global systematic review'](#) Public Health: volume 179, pages 9 to 17
184. Murage P, Hajat S, Kovats RS (2017). ['Effect of night-time temperatures on cause and age-specific mortality in London'](#) Environmental Epidemiology: volume 1, page e005
185. House of Commons Environmental Audit Committee (2018). ['Heatwaves: adapting to climate change: ninth report of session 2017 to 2019'](#)
186. Met Office (2022). ['UKCP headline findings'](#)
187. Mayor of London (2022). ['Cool spaces: summer 2022'](#)
188. Kingsborough A, Jenkins K, Hall JW (2017). ['Development and appraisal of long-term adaptation pathways for managing heat-risk in London'](#) Climate Risk Management: volume 16, pages 73 to 92
189. Francis LFM, Jensen MB (2017). ['Benefits of green roofs: a systematic review of the evidence for 3 ecosystem services'](#) Urban Forestry and Urban Greening: volume 28, pages 167 to 176
190. Besir AB, Cuce E (2018). ['Green roofs and facades: a comprehensive review'](#) Renewable and Sustainable Energy Reviews: volume 82, pages 915 to 939
191. Al-Kayiem HH, Koh K, Riyadi TWB, Effendy M (2020). ['A comparative review on greenery ecosystems and their impacts on sustainability of building environment'](#) Sustainability: volume 12, page 8529
192. Defra (2022). ['UK Climate Change Risk Assessment'](#)
193. BEIS (2021). ['Cooling in the UK'](#)
194. UK Energy Research Centre (UKERC) (2020). ['VUGER report: domestic air conditioning in 2050'](#)
195. Gupta R, Gregg M, Williams K (2015). ['Cooling the UK housing stock post-2050s'](#) Building Services Engineering Research and Technology: volume 36, pages 196 to 220
196. Bhamare DK, Rathod MK, Banerjee J (2019). ['Passive cooling techniques for building and their applicability in different climatic zones: the state of art'](#) Energy and Buildings: volume 198, pages 467 to 490
197. Gupta R, Howard A, Davies M, Mavrogianni A, Tsoulou I, Jain N, and others (2021). ['Monitoring and modelling the risk of summertime overheating and passive solutions to avoid active cooling in London care homes'](#) Energy and Buildings: volume 252, page

111418

198. Baborska-Narożny M, Stevenson F, Grudzińska M (2017). '[Overheating in retrofitted flats: occupant practices, learning and interventions](#)' Building Research and Information: volume 45, pages 40 to 59
199. Hellwig RT, Teli D, Schweiker M, Choi JH, Lee MCJ, Mora R, and others (2019). '[A framework for adopting adaptive thermal comfort principles in design and operation of buildings](#)' Energy and Buildings: volume 205, page 109476
200. Chenari B, Carrilho JD, da Silva MG (2016). '[Towards sustainable, energy-efficient and healthy ventilation strategies in buildings: a review](#)' Renewable and Sustainable Energy Reviews: volume 59, pages 1426 to 1447
201. Porritt S, Shao L, Cropper P, Goodier C (2011). '[Adapting dwellings for heat waves](#)' Sustainable Cities and Society: volume 1, pages 81 to 90
202. Capeluto IG, Ochoa CE (2014). '[Simulation-based method to determine climatic energy strategies of an adaptable building retrofit facade system](#)' Energy: volume 76, pages 375 to 384
203. Mavrogianni A, Davies M, Taylor J, Chalabi Z, Biddulph P, Oikonomou E, and others (2014). '[The impact of occupancy patterns, occupant-controlled ventilation and shading on indoor overheating risk in domestic environments](#)' Building and Environment: volume 78, pages 183 to 198
204. Porritt SM, Cropper PC, Shao L, Goodier CI (2012). '[Ranking of interventions to reduce dwelling overheating during heat waves](#)' Energy and Buildings: volume 55, pages 16 to 27
205. Berardi U, GhaffarianHoseini A, GhaffarianHoseini A (2014). '[State-of-the-art analysis of the environmental benefits of green roofs](#)' Applied Energy: volume 115, pages 411 to 428
206. Barozzi B, Bellazzi A, Pollastro MC (2016). '[The energy impact in buildings of vegetative solutions for extensive green roofs in temperate climates](#)' Buildings: volume 6, page 33
207. Ascione F, De Masi RF, Mastellone M, Ruggiero S, Vanoli GP (2020). '[Green walls, a critical review: knowledge gaps, design parameters, thermal performances and multi-criteria design approaches](#)' Energies: volume 13, page 2296
208. Greater London Authority (2021). '[The London Plan](#)'
209. Imran HM, Kala J, Ng AWM, Muthukumaran S (2018). '[Effectiveness of green and cool roofs in mitigating urban heat island effects during a heatwave event in the city of Melbourne in south-east Australia](#)' Journal of Cleaner Production: volume 197, pages 393 to 405
210. Macintyre HL, Heaviside C, Cai X, Phalkey R (2021). '[Comparing temperature-related mortality impacts of cool roofs in winter and summer in a highly urbanized European region for present and future climate](#)' Environment International: volume 154, page 106606
211. Solgi E, Hamedani Z, Fernando R, Skates H, Orji NE (2018). '[A literature review of night ventilation strategies in buildings](#)' Energy and Buildings: volume 173, pages 337 to 352
212. Acoustics and Noise Consultants (ANC) (2020). '[Accoustics ventilation and overheating: residential design guide](#)' volume 1.1
213. Murtagh N, Gatersleben B, Fife-Schaw C (2019). '[Occupants' motivation to protect residential building stock from climate-related overheating: a study in southern England](#)'

- Journal of Cleaner Production: volume 226, pages 186 to 194
214. Aletta F, Oberman T, Kang J (2018). '[Associations between positive health-related effects and soundscapes perceptual constructs: a systematic review](#)' International Journal of Environmental Research and Public Health: volume 15, page 2392
 215. Fink D (2019). '[A new definition of noise: noise is unwanted and/or harmful sound: noise is the new 'secondhand smoke'](#)' Proceedings of Meetings on Acoustics: volume 39, page 050002
 216. Harvie-Clark J, Siddall M (2014). '[Noise and ventilation in dwellings: problems and opportunities](#)'
 217. Coleman K, Dance S (2019). '[Post occupancy perception of acoustics, ventilation and overheating within residential dwellings](#)'
 218. Department of Health and Social Care (2013). '[Health Technical Memorandum 08-01: Acoustics](#)'
 219. Department for Education (2015). '[BB93 Acoustic design of schools: performance standards](#)'
 220. Fabris C (2015). 'German policy for new noise nuisance in sensitive areas' In: 44th International Congress and Exposition on Noise Control Engineering (Inter-Noise)
 221. Conlan N, Harvie-Clark J (2018). '[Using planning conditions to improve indoor environmental quality \(IEQ\) of new residential developments](#)' In: Proceedings of the Institute of Acoustics
 222. British Standards Institution (BSI) (2019). '[Energy performance of buildings - ventilation for buildings - part 1: Indoor environmental input parameters for design and assessment of energy performance of buildings addressing indoor air quality, thermal environment, lighting and acoustics - Module M1](#)'
 223. International Organization for Standardization (ISO) (2021). '[ISO/TS 19488:2021 Acoustics: acoustic classification of dwellings](#)'
 224. Harvie-Clark J, Conlan N, Wei W, Siddall M (2017). '[How loud is too loud? Noise from domestic mechanical ventilation systems](#)' International Journal of Ventilation: volume 18, pages 303 to 312
 225. Torresin S, Albatici R, Aletta F, Babich F, Oberman T, Siboni S, and others (2020). '[Indoor soundscape assessment: a principal components model of acoustic perception in residential buildings](#)' Building and Environment: volume 182, pages 107152
 226. Zero Carbon Hub (2016). '[Ventilation in new homes: a report of site visit findings](#)'
 227. WHO (2018). '[Environmental noise guidelines for the European Region](#)'
 228. Eriksson C, Pershagen G (2018). '[Biological mechanisms related to cardiovascular and metabolic effects by environmental noise](#)'
 229. Munzel T, Sorensen M, Daiber A (2021). '[Transportation noise pollution and cardiovascular disease](#)' Nature Reviews Cardiology: volume 18, pages 619 to 636
 230. Vienneau D, Eze I, Probst-Hensch N, Roosli M (2019). '[Association between transportation noise and cardio-metabolic diseases: an update of the WHO meta-analysis](#)' In: 23rd International Congress on Acoustics
 231. Hegewald J, Schubert M, Freiberg A, Starke KR, Augustin F, Riedel-Heller SG, and others (2020). '[Traffic noise and mental health: a systematic review and meta-analysis](#)'

- International Journal of Environmental Research and Public Health: volume 17, page 6175
232. Thompson R, Smith RB, Karim YB, Shen C, Drummond K, Teng C, and others (2022). ['Noise pollution and human cognition: an updated systematic review and meta-analysis of recent evidence'](#) Environment International: volume 158, page 106905
233. Hamilton S, Fenech B, Hansell A, Gong X, Vienneau D (2022). ['Systematic review and meta-analyses of association between transportation noise and ischaemic heart disease based on studies published between 1994 and 2022'](#) Inter-Noise 2022, pages 2809 to 2820
234. Liu C, Li W, Chen X, Liu M, Zuo L, Chen L, and others (2023). ['Dose-response association between transportation noise exposure and type 2 diabetes: A systematic review and meta-analysis of prospective cohort studies'](#) Diabetes and Metabolism Research and Reviews: volume 39, page e3595
235. Sakhvidi MJZ, Sakhvidi FZ, Mehrparvar AH, Foraster M, Dadvand P (2018). ['Association between noise exposure and diabetes: a systematic review and meta-analysis'](#) Environmental Research: volume 166, pages 647 to 657
236. Smith MG, Makayla C, Mathias B (2023). ['Environmental noise and effects on sleep: an update to the WHO systematic review and meta-analysis'](#) Environmental Health Perspectives: volume 130, page 76001
237. Maschke C, Niemann H (2007). ['Health effects of annoyance induced by neighbour noise'](#) Noise Control Engineering Journal: volume 55, pages 348 to 356
238. Park SH, Lee PJ (2017). ['Effects of floor impact noise on psychophysiological responses'](#) Building and Environment: volume 116, pages 173 to 181
239. Hahad O, Beutel M, Gori T, Schulz A, Blettner M, Pfeiffer N, and others (2018). ['Annoyance to different noise sources is associated with atrial fibrillation in the Gutenberg Health Study'](#) International Journal of Cardiology: volume 264, pages 79 to 84
240. Jensen HAR, Rasmussen B, Ekholm O (2019). ['Neighbour noise annoyance is associated with various mental and physical health symptoms: results from a nationwide study among individuals living in multi-storey housing'](#) BMC Public Health: volume 19, page 1508
241. Ohlwein S, Hennig F, Lucht S, Matthiessen C, Pundt N, Moebus S, and others (2019). ['Indoor and outdoor road traffic noise and incident diabetes mellitus: results from a longitudinal German cohort study'](#) Environmental Epidemiology: volume 3, page e037
242. Ohrstrom E, Skanberg A (2004). ['Sleep disturbances from road traffic and ventilation noise: laboratory and field experiments'](#) Journal of Sound and Vibration: volume 271, pages 279 to 296
243. Hongisto V, Saarinen P, Oliva D (2019). ['Annoyance of low-level tonal sounds: a penalty model'](#) Applied Acoustics: volume 145, pages 358 to 361
244. Soeta Y, Onogawa E (2021). ['Multidimensional psychological evaluation of air conditioner sounds and prediction via correlation parameters'](#) Frontiers in Built Environment: volume 7, page 659115
245. Tonne C, Mila C, Fecht D, Alvarez M, Gulliver J, Smith J, and others (2018). ['Socioeconomic and ethnic inequalities in exposure to air and noise pollution in London'](#)

- Environment International: volume 115, pages 170 to 179
246. Mueller N, Rojas-Rueda D, Khreis H, Cirach M, Mila C, Espinosa A, and others (2018). ['Socioeconomic inequalities in urban and transport planning related exposures and mortality: a health impact assessment study for Bradford, UK'](#) Environment International: volume 121, pages 931 to 941
247. Riedel N, van Kamp I, Dreger S, Bolte G, Andringa T, Payne SR, and others (2021). ['Considering "non-acoustic factors" as social and environmental determinants of health equity and environmental justice: reflections on research and fields of action towards a vision for environmental noise policies'](#) Transportation Research Interdisciplinary Perspectives: volume 11, page 100445
248. Paris-Newton JAE, Prokofieva E, Henry N (2015). ['Improvement of thermal insulation of residential buildings' facades via acoustic insulation'](#) Energy Procedia: volume 78, pages 3446 to 3451
249. Park HK, Kim H (2015). ['Acoustic insulation performance of improved airtight windows'](#) Construction and Building Materials: volume 93, pages 542 to 550
250. Bessa J, Mota C, Cunha F, Merino F, Figueiro R (2017). ['Multi-layer structures with thermal and acoustic properties for building rehabilitation'](#) 17th World Textile Conference AUTEX
251. Granzotto N, Bettarello F, Ferluga A, Marsich L, Schmid C, Fausti P, and others (2017). ['Energy and acoustic performances of windows and their correlation'](#) Energy and Buildings: volume 136, pages 189 to 198
252. Ferrante A, Fotopoulou A, Semprini G, Cantelli D, Ruggiero S, Karalis M, and others (2019). ['IEQ and energy improvement of existing buildings by prefabricated facade additions: the case of a student house in Athens'](#) IOP Conference Series: Materials Science and Engineering: volume 609, page 042047
253. Brown AL, van Kamp I (2017). ['WHO environmental noise guidelines for the European Region: a systematic review of transport noise interventions and their impacts on health'](#) International Journal of Environmental Research and Public Health: volume 14, page 873
254. Di Bella A, Mastino CC, Barbaresi L, Granzotto N, Baccoli R, Morandi F (2017). ['Comparative study of prediction methods and field measurements of the acoustic performances of buildings made with CLT elements'](#) Inter-Noise
255. Pedroso M, de Brito J, Silvestre JD (2017). ['Characterization of eco-efficient acoustic insulation materials \(traditional and innovative\)'](#) Construction and Building Materials: volume 140, pages 221 to 228
256. Volf M, Lupíšek A, Bureš M, Nováček J, Hejtmánek P, Tywoniak J (2018). ['Application of building design strategies to create an environmentally friendly building envelope for nearly zero-energy buildings in the central European climate'](#) Energy and Buildings: volume 165, pages 35 to 46
257. Yeung M (2016). ['Adopting specially designed balconies to achieve substantial noise reduction for residential buildings'](#) Inter-Noise
258. Conlan N, Harvie-Clark J (2017). ['Methods of controlling noise levels and overheating in residential buildings'](#) International Congress on Sound and Vibration
259. Cheung F, Li L, Lai AKL, Chan HCK (2019). ['Case studies of innovative window and](#)

- [balcony design for traffic noise mitigation](#)' Acoustics
260. Ge M, Li J (2019). '[The current status of natural ventilation-enabling noise reduction devices in urban green buildings](#)' Inter-Noise
261. Sakamoto S, Aoki A (2015). '[Numerical and experimental study on noise shielding effect of eaves and louvers attached on building façade](#)' Building and Environment: volume 94, pages 773 to 784
262. Martello NZ, Fausti P, Santoni A (2015). '[Experimental analysis of sound absorbing shading systems for the acoustic protection of facades](#)' International Congress on Sound and Vibration
263. Lee HM, Tan LB, Lim KM, Lee HP, Xie J (2018). '[Environmental noise attenuation by resonator blinds](#)' International Conference on Civil and Hydraulic Engineering
264. De la Prida D, Pedrero A, Navacerrada MA, Diaz-Chyla A (2019). '[The effect of the rolling shutter in the perception of the sound insulation](#)' Inter-Noise
265. Cui S, Perret-Gentil M, Gourdon E, Barthelmé AF, El Mankibi M, Wurtz E, and others (2016). '[A global modelling approach of natural ventilation with acoustic and daylighting constraints](#)' International Journal of Ventilation: volume 15, pages 233 to 252
266. Conlan N, Harvie-Clark J (2019). '[Ventilative cooling in noisy environments: practical options for the UK](#)' International Congress on Acoustics
267. Ji WG, Yang HS, Kim TM, Kim GT (2019). '[Development of natural ventilation devices attached to building envelope to reduce traffic noise](#)' Inter-Noise
268. Sondergaard LS, Legarth S V (2014). '[Investigation of sound insulation for a Supply Air Window field measurements and occupant response](#)' Inter-Noise
269. Rasmussen B (2015). '[Experiences with sound insulating open windows in traffic noise exposed housing](#)' Inter-Noise
270. Mediastika CE, Kristanto L, Anggono J, Suhedi F, Purwaningsih H (2018). '[Open windows for natural airflow and environmental noise reduction](#)' Architectural Science Review: volume 61, pages 338 to 348
271. Lorenzen P (2019). '[Noise control through open windows - A solution model](#)' Inter-Noise
272. Yu X (2019). '[Design and in-situ measurement of the acoustic performance of a metasurface ventilation window](#)' Applied Acoustics: volume 152, pages 127 to 132
273. Du L, Lau SK, Lee SE, Danzer MK (2020). '[Experimental study on noise reduction and ventilation performances of sound-proofed ventilation window](#)' Building and Environment: volume 181, page 107105
274. Wang Y, Bakker F, de Groot R, Wörtche H (2014). '[Effect of ecosystem services provided by urban green infrastructure on indoor environment: a literature review](#)' Building and Environment: volume 77, pages 88 to 100
275. van Renterghem T (2017). '[Green roofs for noise reduction: literature review and new approaches](#)' Inter-Noise
276. van Renterghem T (2018). '[Green roofs for acoustic insulation and noise reduction](#)' Nature Based Strategies for Urban and Building Sustainability: pages 167 to 179
277. Leistner P, Kaufmann A, Koehler M, Wurth M, Hofbauer WK, Dittrich S (2019). '[Building physics design of urban surfaces](#)' Sustainable Built Environment Conference
278. Lacasta AM, Peñaranda A, Cantalapiedra IR (2018). '[Green streets for noise reduction](#)'

- Nature Based Strategies for Urban and Building Sustainability: pages 181 to 190
279. HOSANNA (2013). '[Novel solutions for quieter and greener cities](#)'
280. Pérez G, Coma J, Barreneche C, de Gracia A, Urrestarazu M, Burés S, and others (2016). '[Acoustic insulation capacity of Vertical Greenery Systems for buildings](#)' Applied Acoustics: volume 110, pages 218 to 226
281. Pérez G, Coma J, Cabeza LF (2018). '[Vertical greening systems for acoustic insulation and noise reduction](#)' Nature Based Strategies for Urban and Building Sustainability: pages 157 to 165
282. Sanchez GME, Alves S, Botteldooren D (2018). '[Urban sound planning: an essential component in urbanism and landscape architecture](#)' In: Handbook of Research on Perception-Driven Approaches to Urban Assessment and Design
283. Kang J (2019). '[Noise management: soundscape approach](#)' In: Encyclopedia of Environmental Health: pages 683 to 694
284. van Renterghem T, Botteldooren D (2016). '[View on outdoor vegetation reduces noise annoyance for dwellers near busy roads](#)' Landscape and Urban Planning: volume 148, pages 203 to 215
285. Peris E, Fenech B (2020). '[Associations and effect modification between transportation noise, self-reported response to noise and the wider determinants of health: a narrative synthesis of the literature](#)' Science of The Total Environment: volume 748, page 141040
286. Sayers PB, Horritt M, Carr S, Kay A, Mauz J, Lamb R, and others (2020). '[Third UK Climate Change Risk Assessment \(CCRA3\): Future flood risk - main report](#)'
287. Gargano LM, Locke S, Jordan HT, Brackbill RM (2018). '[Lower respiratory symptoms associated with environmental and reconstruction exposures after Hurricane Sandy](#)' Disaster Medicine and Public Health Preparedness: volume 12, pages 697 to 702
288. Chow NA, Toda M, Pennington AF, Anassi E, Atmar RL, Cox-Ganser JM, and others (2019). '[Hurricane-associated mould exposures among patients at risk for invasive mould infections after Hurricane Harvey in Houston, Texas, 2017](#)' Morbidity and Mortality Weekly Report: volume 68, pages 469 to 473
289. Coelho GBA, Henriques FMA (2016). '[Influence of driving rain on the hygrothermal behavior of solid brick walls](#)' Journal of Building Engineering: volume 7, pages 121 to 132
290. Bastien D, Winther-Gaasvig M (2018). '[Influence of driving rain and vapour diffusion on the hygrothermal performance of a hygroscopic and permeable building envelope](#)' Energy: volume 164, pages 288 to 297
291. Flood Re (2022). '[Annual report and financial statements](#)'
292. Oakley M, Ahern J (2020). '[Flood performance certificates: developing a blueprint for how they can support household climate resilience](#)' WPI Economics
293. Straif K, Baan R, Grosse Y, Secretan B, El Ghissassi F, Bouvard V, and others (2007). '[Carcinogenicity of shift-work, painting, and fire-fighting](#)' Lancet Oncology: volume 8, pages 1065 to 1066
294. IARC (2010). '[Painting, firefighting, and shiftwork](#)' IARC monographs on the evaluation of carcinogenic hazards to humans: volume 98, pages 9 to 764
295. Wright KP, McHill AW, Birks BR, Griffin BR, Rusterholz T, Chinoy ED (2013). '[Entrainment of the human circadian clock to the natural light-dark cycle](#)' Current Biology:

- volume 23, pages 1554 to 1558
296. Pachito D V, Eckeli AL, Desouky AS, Corbett MA, Partonen T, Rajaratnam SM, and others (2018). '[Workplace lighting for improving alertness and mood in daytime workers](#)' Cochrane Database of Systematic Reviews: volume 3, page Cd012243
 297. Ward EM, Germolec D, Kogevinas M, McCormick D, Vermeulen R, Anisimov VN, and others (2019). '[Carcinogenicity of night shift work](#)' Lancet Oncology: volume 20, pages 1058 to 1059
 298. IARC (2020). '[Night shift work](#)' In: IARC Monographs on the Identification of Carcinogenic Hazards to Humans 2020: pages 9 to 366
 299. Foster RG (2021). '[Fundamentals of circadian entrainment by light](#)' Lighting Research and Technology: volume 53, pages 377 to 393
 300. Eye Health UK (2022). '[Testing the nation's Eye Q](#)'
 301. Stefani O, Cajochen C (2021). '[Should we re-think regulations and standards for lighting at workplaces? A practice review on existing lighting recommendations](#)' Front Psychiatry: volume 12, page 652161
 302. Brown TM, Brainard GC, Cajochen C, Czeisler CA, Hanifin JP, Lockley SW, and others (2022). '[Recommendations for daytime, evening, and nighttime indoor light exposure to best support physiology, sleep, and wakefulness in healthy adults](#)' PLoS Biology: volume 20, page e3001571
 303. Institute of Electrical and Electronics Engineers (IEEE) (2015). '[Recommended practices of modulating current in high brightness LEDs for mitigating health risks to viewers](#)'. IEEE Standard: pages 1 to 80
 304. Davies M, Oreszczyn T (2012). '[The unintended consequences of decarbonising the built environment: a UK case study](#)' Energy and Buildings: volume 46, pages 80 to 85
 305. Shrubsole C, Das P, Milner J, Hamilton IG, Spadaro J V, Oikonomou E, and others (2015). '[A tale of 2 cities: comparison of impacts on CO2 emissions, the indoor environment and health of home energy efficiency strategies in London and Milton Keynes](#)' Atmospheric Environment: volume 120, pages 100 to 108
 306. Gupta R, Howard A (2022). 'Exposure to indoor air pollutants in a deep energy retrofit of block of flats in the UK' Proceedings of Indoor Air 2022
 307. Sharpe T, Mawditt I, Gupta R, McGill G, Gregg M (2016). '[Characteristics and performance of MVHR systems: a meta study of MVHR systems used in the Innovate UK Building Performance Evaluation Programme](#)'
 308. McGill G, Oyedele LO, McAllister K (2015). '[An investigation of indoor air quality, thermal comfort and sick building syndrome symptoms in UK energy efficient homes](#)' Smart and Sustainable Built Environment: volume 4, pages 329 to 348
 309. Gupta R, Zahiri S (2022). 'Indoor air quality in social housing flats retrofitted with heat pumps' Indoor Air
 310. Hamilton I, Milner J, Chalabi Z, Das P, Jones B, Shrubsole C, and others (2015). '[Health effects of home energy efficiency interventions in England: a modelling study](#)' BMJ Open: volume 5, page e007298
 311. Symonds P, Rees D, Daraktchieva Z, McColl N, Bradley J, Hamilton I, and others (2019). '[Home energy efficiency and radon: an observational study](#)' Indoor Air: volume 29, pages

854 to 864

312. Sharpe RA, Thornton CR, Nikolaou V, Osborne NJ (2015). '[Higher energy efficient homes are associated with increased risk of doctor diagnosed asthma in a UK subpopulation](#)' Environment International: volume 75, pages 234 to 244
313. Maidment CD, Jones CR, Webb TL, Hathway EA, Gilbertson JM (2014). '[The impact of household energy efficiency measures on health: a meta-analysis](#)' Energy Policy: volume 65, pages 583 to 593
314. Sharpe RA, Machray KE, Fleming LE, Taylor T, Henley W, Chenore T, and others (2019). '[Household energy efficiency and health: area-level analysis of hospital admissions in England](#)' Environment International: volume 133, page 105164
315. Milner J, Chalabi Z, Vardoulakis S, Wilkinson P (2015). '[Housing interventions and health: quantifying the impact of indoor particles on mortality and morbidity with disease recovery](#)' Environment International: volume 81, pages 73 to 79
316. Berry RW, Brown VM, Coward SKD, Crump DR, Gavin M, Grimes CP, and others (1996). 'Indoor Air Quality in Homes' The BRE Indoor Environment Study
317. Petrou G, Hutchinson E, Mavrogianni A, Milner J, Macintyre H, Phalkey R, and others (2022). '[Home energy efficiency under net zero: time to monitor UK indoor air](#)' British Medical Journal: volume 377, page e069435

About the UK Health Security Agency

UKHSA is responsible for protecting every member of every community from the impact of infectious diseases, chemical, biological, radiological and nuclear incidents and other health threats. We provide intellectual, scientific and operational leadership at national and local level, as well as on the global stage, to make the nation health secure.

UKHSA is an executive agency, sponsored by the [Department of Health and Social Care](#).

© Crown copyright 2023

For queries relating to this document, please contact: climate.change@ukhsa.gov.uk

Published: December 2023

Publishing reference: GOV-14571



You may re-use this information (excluding logos) free of charge in any format or medium, under the terms of the Open Government Licence v3.0. To view this licence, visit [OGL](#). Where we have identified any third party copyright information you will need to obtain permission from the copyright holders concerned.



UKHSA supports the Sustainable Development Goals

