



Making Research Count

at the Universities of
Bedfordshire and King's College London



November 2021

Inside this issue

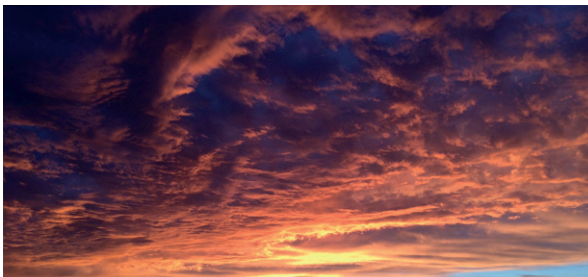
- 2 Children's Services Events
- 3 Safer Young Lives Research Centre
The Lifelong Health and Wellbeing Trajectories of People Who Have Been in Care
- 4 Social Care Responses to Self-Neglect and Hoarding Among Older People
Technology Abuse of Women With Intellectual or Cognitive Disability
- 5 Adult Services Events
- 6 Other Forthcoming Events
- 8 Schwartz Rounds in Social Care
Life in Lockdown: Child and Adolescent Mental Health and Well-Being

Practice Development Webinar

Wednesday 12 January 2022
11.00am - 12.30pm

Working With Adolescent to Parent Abuse

Simon Kerss
Anglia Ruskin University



Simon Kerss is a Lecturer in criminology at Anglia Ruskin University, Cambridge. His specialism as a criminologist is in victimology, specifically in agency responses to genderbased violence, domestic abuse and sexual violence. He is also a private consultant, quality assuring Domestic Homicide Reviews on behalf of the Home Office.

In this webinar, Simon will discuss the causes of, and risk factors inherent in, adolescent to parent violence and abuse. He will then go on to relate these issues to current safeguarding practices

To book your place, please click [here](#).



Webinar series:

Homelessness

This series of webinars is delivered by Gill Taylor, Strategic Lead for Single Homelessness and Vulnerable Adults, London Borough of Haringey, and a range of guest speakers.

Thursday 4 November 2021, 10.00 - 11.30am
Trauma-Informed Practice in Rough Sleeping Services

Thursday 16 December 2021, 10.00 - 11.30am
Equally Homeless? Exploring the Impact of Age, Gender, Race and Sexuality on Experiences of Homelessness

Thursday 27 January 2022, 10.00 - 11.30am
Homelessness, Safeguarding and the Care Act

Thursday 10 March 2022, 10.00 - 11.30am
Co-Production with People with Lived Experience of Homelessness

Thursday 28 April 2022, 10.00 - 11.30am
Homelessness Law, Policy and Strategy

Thursday 26 May 2022, 10.00 - 11.30am
Dying Homeless: Preventing the Premature Deaths of Homeless People

For details of the above events, please click [here](#).

Earlier webinars in this series:

July 2021
Homelessness in the UK: Facts, Myths and Uncomfortable Truths

September 2021
Commissioning for the Holistic Needs of People Affected by Homelessness

To access recordings of the previous two webinars, please click on the hyperlinked titles above.



Practice Development Events

For those working in, and with, children's services

Monday 22 November 2021

11.00am - 12.30pm

**Domestic Violence:
The Voices of
Bangladeshi Women and Children**

Aysha Ahmed

University of Bedfordshire

Wednesday 24 November 2021

12.30 - 2.00pm

**The Evolving Role
of Social Work in Children's Services
in 2021**

James Blewett

King's College London

Thursday 9 December 2021

9.30 - 11.00am

Anti-Racism in Social Work

Wayne Reid

British Association of Social Workers (BASW)

Wednesday 12 January 2022

11am - 12.30pm

**Working With
Adolescent to Parent Abuse**

Simon Kerss

Anglia Ruskin University

Thursday 20 January 2022

11.00am - 12.30pm

**Children's Social Workers' Experiences
of Multi-Agency Working
and Information Sharing
During Covid-19**

Dr Kellie Thompson

Liverpool Hope University

Tuesday 8 February 2022

11.00am - 12.30pm

**Understanding the Teenage Brain
- Why This Matters For Social Care**

Prof John Coleman

University of Bedfordshire

Monday 25 April 2022

11.00am - 12.30pm

**Understanding
Polish Women's Experiences
of Domestic Violence in the UK:
Implications for Practice and Policy**

Prof Sundari Anitha

University of Lincoln, and

Dr Iwona Zielinska

Ending Domestic Abuse Now (EDAN)

Lincolnshire

May 2022

Date and Time TBC

Further information will be available on our [website](#) shortly

**Young People's Participation
in Researching Sexual Violence**

Dr Camille Warrington, and

Dr Elsie Whittington

University of Bedfordshire

Tuesday 28 June 2022

11.00am - 12.30pm

Further information will be available on our [website](#) shortly

**How Child-Focused
are Child Protection Conferences?
Findings from a Qualitative Study**

Dr Helen Richardson Foster

University of Central Lancashire

Making Research Count at the
Universities of Bedfordshire
and King's College London

For further details of these,
and other, events visit:

www.beds.ac.uk/mrc

www.kcl.ac.uk/scwru/mrc/index

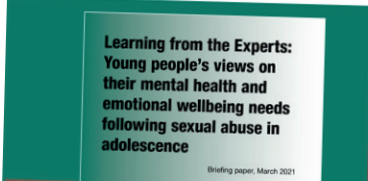


Safer Young Lives University of Bedfordshire

The [Safer Young Lives Research Centre \(SYLRC\)](#) is part of the [Institute of Applied Social Research](#) at the University of Bedfordshire. The purpose of the SYLRC is to create and share knowledge of young people's experiences of abuse, and to work with others - locally, nationally and internationally - to better prevent and respond to this.

The Centre has been in operation for the last fifteen years, during which time it has developed extensive expertise in researching sexual abuse, and in implementing participatory approaches and ethical and innovative methodologies within the field.

Over the last decade, SYLRC has been developing increasing expertise around other forms of abuse and adopting an increasingly holistic approach to understanding experiences of, and responses to, harm.



The Centre has a range of research resources that can be downloaded from their [website](#). To access the reports above, please click on the images. For the full range of SYLRC publications, click [here](#).



The Lifelong Health and Wellbeing Trajectories of People Who Have Been in Care: Findings from the Looked-After Children Grown Up Project

People who spent time in care during childhood are being 'failed' and some social and health inequalities have worsened for these adults since the 1970s, finds a new UCL-led report, based on research documenting people's lives until their 40s.

The Nuffield Foundation has recently published (July 2021) findings from a study carried out by researchers at University College London and King's College London looking at the health and social outcomes of people who have been in care in England and Wales. The study of data from census reports on 353,601 people, including 5,681 who spent time in care as children, found that there were large social, economic and health inequalities in adulthood for people who spent time in care as children.

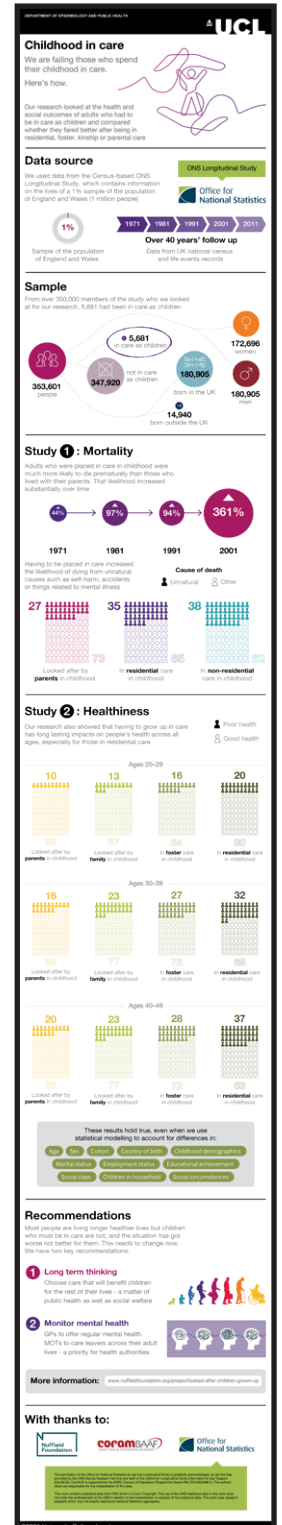
Data was gathered from the ONS Longitudinal Study based on Census reports in 1971, 1981, 1991, 2001 and 2011 and included information on 5,681 adults who were in care in the 1971 to 2001 censuses.

The report shows that, while there was some narrowing of health and social inequalities over time, there were some very notable widening inequalities. For example, the researchers found that early death rates rose from being 40% higher in 1971 to 360% higher in 2001 for adults who had spent time in care.

Read the [news story](#): "We are failing those who spent their childhood in care", says landmark report

Read the report: [The Lifelong Health and Wellbeing Trajectories of People Who Have Been in Care](#) (PDF)

View the infographic: [Childhood in Care](#) (PDF)



Social Care Responses to Self-Neglect and Hoarding Among Older People: What Works in Practice?

The NIHR Policy Research Unit in Health and Social Care Workforce, King's College London, has recently published an evidence review on Adult Social Care responses to self-neglect among older people. It forms part of a NIHR School for Social Care Research funded project being led by Dr John Woolham and Prof Jill Manthorpe.

To read/download the evidence review, please click on the image below.

The report reviews the English-language research literature (published 2015-20) that focuses on Adult Social Care responses to self-neglect among older people. It also examines the law and policy context in England provided by the Care Act 2014 and the Mental Capacity Act 2005.



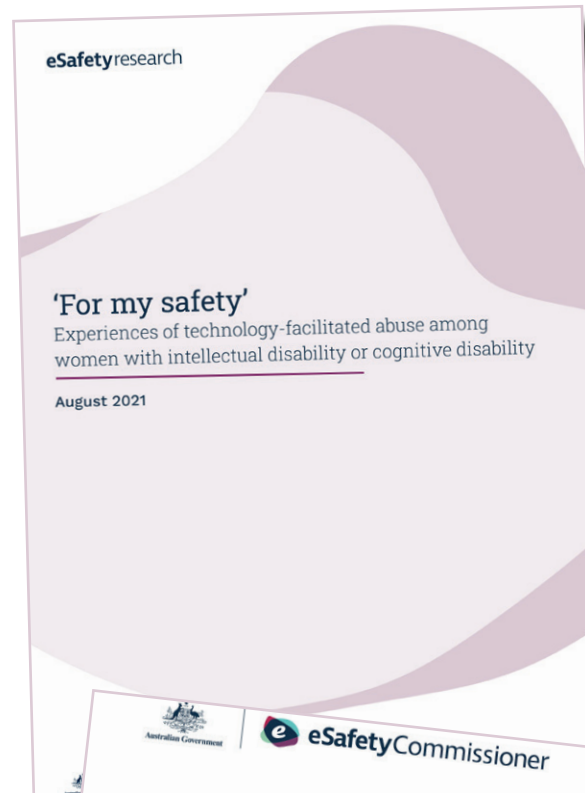
The importance of relationship building and effective multi-agency working were the primary themes.

The overall aim of the study is to improve practice understanding of what works in responses to self-neglect and hoarding among older people. Working with six sites in England, the research team will conduct interviews with safeguarding managers, practitioners and service users and family members. Finally, Michela Tinelli (LSE) will lead on an exploratory evaluation of the economic impact of self-neglect and hoarding among older people.

For more information about the project, please click [here](#).

Technology Abuse of Women With Intellectual or Cognitive Disability

A new report commissioned by the Australian eSafety Commissioner and written by Dr Bridget Harris and Delanie Woodlock explores experiences of tech abuse among women living with intellectual or cognitive disabilities. The document not only offers an overview of women's experiences of tech abuse but also outlines distinct barriers to support and recommendations for policy and practice.



To access the report, and the easy read summary, please click on the images above.

Practice Development Events

For those working in, and with, adult's services

Wednesday, 24 November 2021, 2.00-4.00pm

Home Care Research Forum

**Before and Beyond Covid:
The Effects of Covid on PAs and IEs
Across Greater Manchester**

Katherine McDermott

William Case Advocacy: Your Support Matters

**Preventing
Incontinence Associated Dermatitis:
An Overview of Current Research**

Dr Sue Woodward & Sangeeta Sooriah

King's College London

29 November 2021, 11.00am - 1.00pm

Suicide and Gambling

Dr Steve Sharman

Society for the Study of Addiction

Thursday 9 December 2021, 9.30 - 11.00am

Anti-Racism in Social Work

Wayne Reid

British Association of Social Workers (BASW)

Thursday 20 January 2022, 2.00 - 4.00pm

Day Centre Research Forum

Details to be confirmed

Monday 24 January 2022, 14:00 to 15:00

Supported Employment for Young People with Disabilities: Lessons from the NHS as an Employer

Prof Ian Kessler

King's College London

Monday 25 April 2022, 11.00am - 12.30pm

Understanding Polish Women's Experiences of Domestic Violence in the UK: Implications for Practice and Policy

Prof Sundari Anitha

University of Lincoln, and

Dr Iwona Zielinska

Ending Domestic Abuse Now (EDAN) Lincolnshire

Webinar series:

Homelessness

This series of webinars is delivered by Gill Taylor, Strategic Lead for Single Homelessness and Vulnerable Adults, London Borough of Haringey, and a range of guest speakers.

Thursday 4 November 2021, 10.00 - 11.30am

Trauma-Informed Practice in Rough Sleeping Services

Thursday 16 December 2021, 10.00 - 11.30am

Equally Homeless? Exploring the Impact of Age, Gender, Race and Sexuality on Experiences of Homelessness

Thursday 27 January 2022, 10.00 - 11.30am
Homelessness, Safeguarding and the Care Act

Thursday 10 March 2022, 10.00 - 11.30am
Co-Production with People
with Lived Experience of Homelessness

Thursday 28 April 2022, 10.00 - 11.30am
Homelessness Law, Policy and Strategy

Thursday 26 May 2022, 10.00 - 11.30am
Dying Homeless:
Preventing the Premature Deaths
of Homeless People

For details of the above events, please click [here](#).

Earlier webinars in this series:

July 2021

Homelessness in the UK: Facts, Myths and Uncomfortable Truths

September 2021

Commissioning for the Holistic Needs of People Affected by Homelessness

To access recordings of the previous two webinars, please click on the hyperlinked titles above.



For further details of these,
and other, events visit:

www.beds.ac.uk/mrc

www.kcl.ac.uk/scwru/mrc/index

Conferences

ISPCAN 1st Virtual World Summit 2021: Facing our Post-COVID World with Resilience, Data and Effective Solutions in Child Protection

4-5 November 2021, Online

This 2-day summit will engage policy makers, researchers, academia and practitioners to identify evidence based solutions to effectively address the child protection challenges in the Post COVID-19 era.

Themes:

- Addressing violence against children during COVID-19
- COVID-19 and its impact on the most vulnerable children (child labor, trafficking, racial bias)
- Challenges and solutions of Parenting during COVID-19
- COVID-19 and its impact on child protection services-how to adapt?
- Keeping children safe online
- Issues in school, sports and faith
- Telehealth and safeguarding
- Effects of climate & voices of youth

For further information, click [here](#)

Children and Young People's Mental Health: New Normal - Same Crisis Conference

*18 November 2021,
The Royal National Hotel, London*

Open Forum Events are delighted to be back and bringing you our 9th National Children and Young People's Mental Health Conference. Our face-to-face conference will equip delegates with knowledge of tackling issues with access to services, funding and legislating to support CAMHS and service users.

For further information, click [here](#)

National Children and Adult Services Conference (NCASC)

24-26 November 2021, Online

The National Children and Adult Services (NCAS) Conference is the annual opportunity for those with responsibilities in social care, children's services, education, health and related fields to hear about and respond to the very latest thinking on key policy and improvement agendas. Organised jointly by the Local Government Association (LGA), the Association of Directors of Social Services (ADASS) and the Association of Directors of Children's Services (ADCS), the conference is widely recognised as the most important annual event of its kind.

This year's virtual conference will offer members

These are not Making Research Count events, but may be of interest to our members.

If you would like further information, please click on the related link.

and officers across councils and their local and national partners the opportunity to hear from high profile ministerial and keynote speakers and to engage in interactive sessions on the current and future challenges.

For further information, click [here](#)

Adult Safeguarding Investigation: Undertaking and Learning from Safeguarding Adults Reviews

4 February 2022, Online

Organised by Social Care Conferences UK, this conference focuses on Adult Safeguarding Investigation and Undertaking and Learning from Safeguarding Adults Reviews.

The conference will enable you to:

- Improve practice in Adult Safeguarding Investigation and Safeguarding Adults Reviews;
- Reflect on the lived experience, and understand how to better involve people and families;
- Develop your skills in adult safeguarding investigation;
- Update your knowledge on the law and statutory requirements;
- Understand the core principles of Safeguarding Adults Reviews, effective methodology and quality markers;
- Develop strategies for the identification of non-death or injury reviews that are of value;
- Gain practical advice and tips on interviewing and report writing;
- Ensure the learning from Safeguarding Adult Reviews (SARs) is used to identify systemic risk issues and improve practice, including the management of Covid-19 related Safeguarding Adults Review (SAR) referrals;
- Understand the police perspective and improve partnership working with the police;
- Improve your skills in decision making in adult safeguarding investigation and escalation;
- Gain CPD accreditation points contributing to professional development and revalidation evidence.

Chair and speakers include:

- Prof Suzy Braye OBE
Emerita Professor of Social Work, University of Sussex, Co-Author, Analysis of Safeguarding Adult Reviews Findings for Sector Led Improvement
- Supt Stan Gilmour
Director, Thames Valley Violence Reduction Unit
- Prof Michael Preston-Shoot
Emeritus Professor of Social Work University of Bedfordshire; Independent Chair Brent Safeguarding Adults Board; Independent Chair Lewisham Safeguarding Adults Board; Joint Coordinator, National SAB Chairs' Network and Adult Safeguarding Consultant

For further information, click [here](#)

Adult Social Care Conference 2022: Delivering Integrated and Personalised Care for All

17 March 2022, Online

Attend the Adult Social Care Conference 2022: Delivering Integrated and Personalised Care for All to hear the latest policy and funding updates on adult social care reform in the UK. Engage with best practice case studies from across the sector on workforce recruitment and wellbeing, improving personalised care and successful integrated care. You will have the opportunity to network with senior colleagues from across the sector, sharing strategies to improve adult social care and meet the growing demand for services.

For further information, click [here](#)

11th European Conference for Social Work Research

6-8 April 2022, Amsterdam, The Netherlands

The European Conference for Social Work Research (ECSWR) is the primary space for members of the European social work research community to gather and get to know each other, to share high quality research and expertise, and to build collaborative relationships and networks.

The [call for abstracts](#) is open.

For further information, click [here](#)

Crime, Justice and the Human Condition

13-14 September 2022,

Keble College, University of Oxford

The last two years have brought the fragility of human existence into sharp relief. This conference, organised by the Howard League for Penal Reform, and accompanying festival for change is emerging from a time of intense uncertainty, in which governments, civil society and communities face formidable problems and difficult choices that could have enduring repercussions for justice.

The conference will bring together contributions from academics, practitioners and other experts in many different fields and disciplines to explore crime, justice and the human condition, and the issues that intersect. Complemented by a festival of thought-provoking creative activities, this will be a wide-ranging discussion, considering crime and justice as they relate to life, growth, maturity, hope, emotion, conflict and mortality from myriad perspectives. They will look at how and where the criminal justice system touches people in their everyday lives, and what this means for society at large.

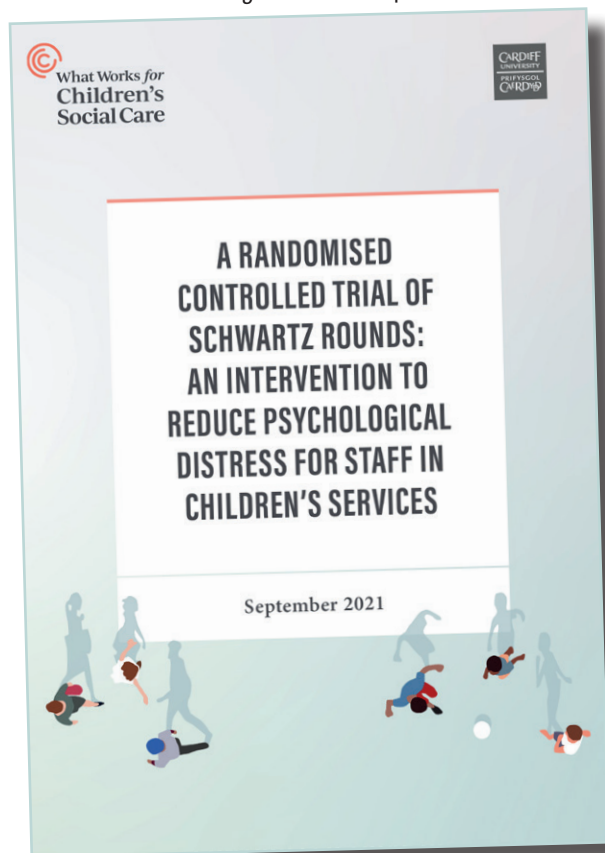
This is an opportunity to examine social bonds, history, creativity, learning and technology, as well as isolation and inequality, racism, harm and hate. They are also keen to explore the links between – and impact of – crime and problem gambling, building on the work of the Howard League's Commission on Crime and Problem Gambling.

For further information, click [here](#)

Collaborative Discussion Groups Bring Wellbeing Boost to Social Care Staff

Schwartz Rounds are monthly sessions that enable staff to come together and discuss the social and emotional impact of their work. They have been shown to be effective in improving staff wellbeing in healthcare and clinical settings, but had never been tested in children's services before.

What Works for Children's Social Care (WWCSC) has released new research on Schwartz Rounds in children's social care. The study, conducted by researchers at CASCADE, Cardiff University, compiles evidence from ten participating local authorities who provided Schwartz Rounds in a series of in-person and online sessions between May 2019 and September 2020.



The study found promising signs of benefit for those who attended Schwartz Rounds, including a small reduction in sickness-related absence, and a lower likelihood of experiencing serious psychological distress. Feedback from staff was also overwhelmingly positive, with people identifying a range of benefits for themselves, their colleagues and families.

[Read the report](#)

[Read the article](#)

What Works for Children's Social Care seeks better outcomes for children, young people and families by bringing the best available evidence to practitioners, policy makers and practice leaders across the children's social care sector.

For more information about What Works for Children's Social Care, and to access their resources, go to: whatworks-csc.org.uk/

Life in Lockdown: Child and Adolescent Mental Health and Well-Being in the Time of COVID-19

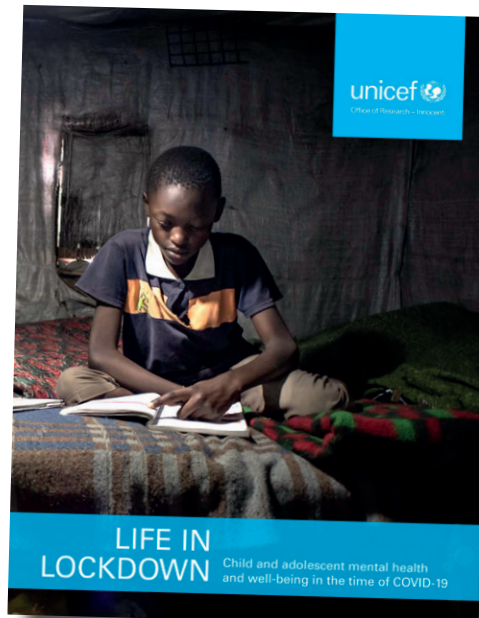
The Office of Research, Innocenti, is UNICEF's dedicated research centre. Its core mandate is to undertake cutting-edge, policy-relevant research that equips the organization and the wider global community to deliver results for children. To achieve its mandate UNICEF Innocenti works closely with all parts of its parent organization as well as a wide array of external academic and research institutions.

Recently published by Innocenti:

Sharma, M., Idele, P., Manzini, A., Aladro, CP., Ipince, A., Olsson, G., Banati, P., Anthony, D. (2021). *Life in Lockdown: Child and Adolescent Mental Health and Well-Being in the Time of COVID-19*. UNICEF Office of Research – Innocenti, Florence.

COVID-19 lockdowns have significantly disrupted the daily lives of children and adolescents, with increased time at home, online learning and limited physical social interaction. This report seeks to understand the immediate effects on their mental health. Covering more than 130,000 children and adolescents across 22 countries, the evidence shows increased stress, anxiety and depressive symptoms, as well as increased alcohol and substance use, and externalizing behavioural problems.

Children and adolescents also reported positive coping strategies, resilience, social connectedness through digital media, more family time, and relief from academic stress. Factors such as demographics, relationships and pre-existing conditions are critical.



To ensure children and adolescents are supported, the report recommends building the evidence on the longer-term impact of the pandemic on child and adolescent mental health in low- and middle-income countries, including vulnerable populations.

To download/read the report, please click on the image above, or click [here](#). To access the full range of UNICEF's research publications, click [here](#).